

C:\Bent\Local Files\CTC\_PHE\_SITE\_AR\_Planbook.dwg

BLD-01144 - North Wing -  
Bldg 02, SPC: 4, NPC: 2

BLD-05487 - Behavioral  
Health Unit - Bldg 11,  
SPC: N/A, NPC: N/A

BLD-02871 - Perinatal Unit/Womens  
Center - Bldg 15A,  
SPC: 4, NPC: 2

BLD-02872 - Perinatal  
Unit/Womens Center -  
Bldg 15B, SPC: 4, NPC: 2

BLD-02874 - Perinatal  
Unit/Womens Center Canopy 3 -  
Bldg 15D, SPC: 4, NPC: 2

BLD-01155 - Ancillary Building -  
Bldg 13, SPC: 4, NPC: 2

BLD-02870 - Emergency Room Addition  
Canopy - Bldg 14B, SPC: 3, NPC: 2

BLD-01151 - Emergency Room Addition -  
Bldg 14A, SPC: 3, NPC: 2

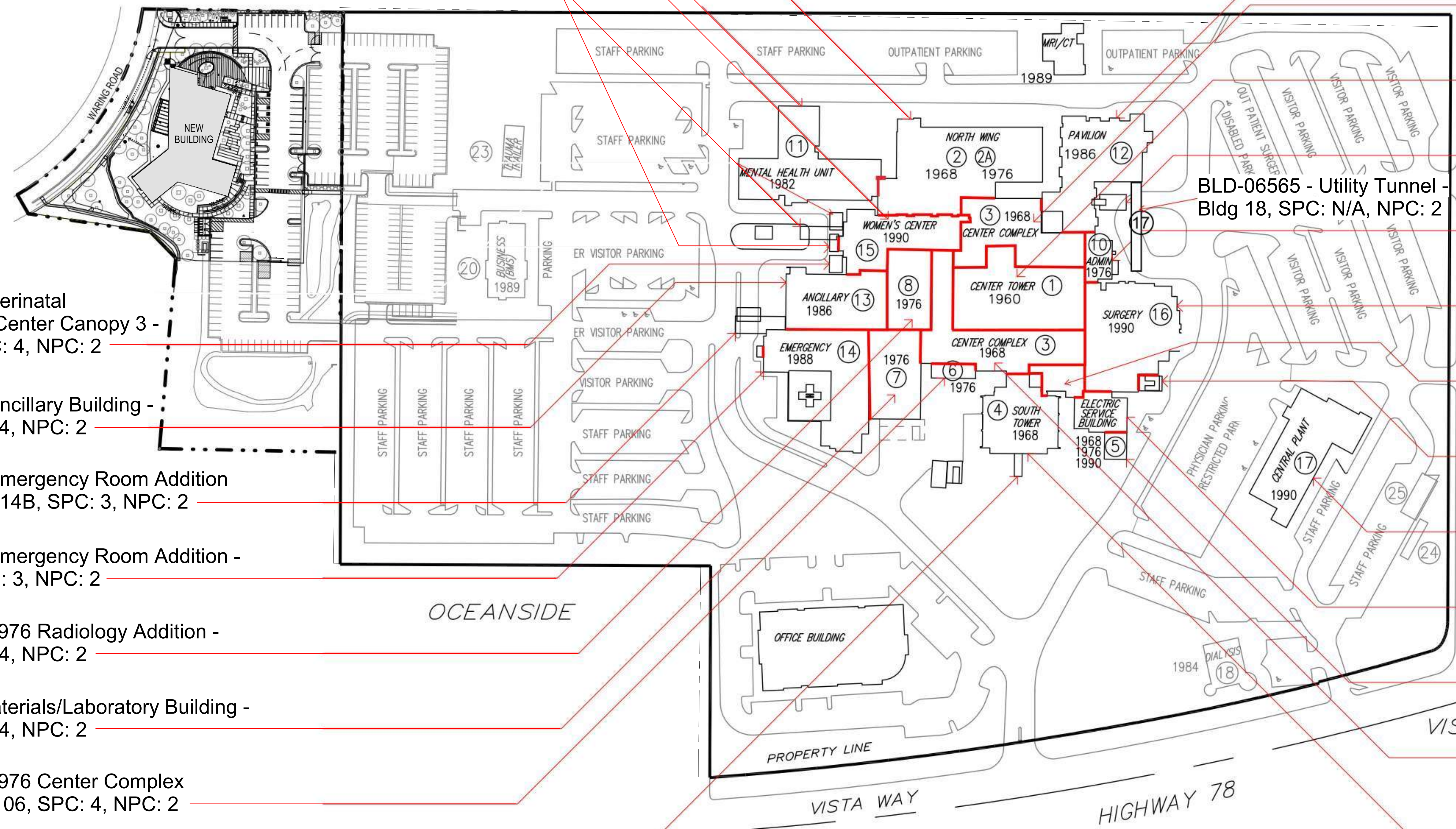
BLD-01150 - 1976 Radiology Addition -  
Bldg 08, SPC: 4, NPC: 2

BLD-01149 Materials/Laboratory Building -  
Bldg 07, SPC: 4, NPC: 2

BLD-01148 - 1976 Center Complex  
Addition - Bldg 06, SPC: 4, NPC: 2

BLD-02868 - South Tower Stair Shaft -  
Bldg 04B, SPC: 2, NPC: 2

# Tri-City Medical Center Facility No. 12372 10/24/19



BLD-01154 - Pavillion Building -  
Bldg 12A, SPC: 4, NPC: 2

BLD-01145 - Center Complex - North -  
Bldg 03A, SPC: 4, NPC: 2

BLD-01143 - Center Tower -  
Bldg 01, SPC: 2, NPC: 2

BLD-01153 - Pavillion Building Canopy -  
Bldg 12B, SPC: 4, NPC: 2

BLD-01152 - Administration Building -  
Bldg 10, SPC: 4, NPC: 2

BLD-02875 - Surgery Addition 1 -  
Bldg 16A, SPC: 3, NPC: 2

BLD-02876 - Surgery Addition 2 -  
Bldg 16B, SPC: 3, NPC: 2

BLD-02877 - Surgery Addition Canopy -  
Bldg 16C, SPC: 3, NPC: 2

BLD-02878 - Central Plant -  
Bldg 17, SPC: 4, NPC: 2

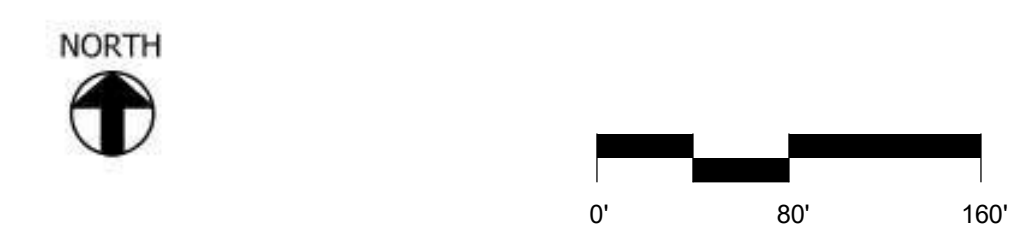
BLD-01147 - Electrical Building -  
Bldg 05A, SPC: 2, NPC: 2

BLD-02869 - Electrical Building  
Addition - Bldg 05B, SPC: 4, NPC: 2

BLD-03766 - Center Complex - South -  
Bldg 03B, SPC: 3, NPC: 2

BLD-01146 - South Tower - Bldg 04A,  
SPC: 2, NPC: 2

## 1 OVERALL CAMPUS PLAN 1" = 80'-0"



**GENERAL NOTE**

1. OWNER TO PROVIDE NEW BUILDING ADDRESS SIGNAGE ON EXISTING MARQUEE AT MAIN ENTRANCE ON VISTA WAY. ADDRESS MUST BE CLEARLY VISIBLE AND LEGIBLE.

2. OWNER TO PROVIDE ADEQUATE RADIO COVERAGE ON THE 800MHZ COUNTRYWIDE COMMUNICATION SYSTEM. WHEN TESTED, IF THE 800MHZ SIGNAL STRENGTH READINGS FALL BELOW 65 IN ANY PORTION OF THE BUILDING, EITHER ABOVE OR BELOW GRADE AS MEASURED BY AN 800 MHZ PORTABLE RADIO, THE PURCHASE AND INSTALLATION OF ONE OR MORE BI-DIRECTIONAL AMPLIFIER RADIO COVERAGE ENHANCER IS REQUIRED.

Tri-City Medical Center  
Psychiatric Health Facility  
402 Vista Way  
Oceanside, CA 92056

**CANNONDESIGN**  
656 Fifth Avenue, Suite A  
San Diego, CA 92101  
P: 619.398.0215  
F: 619.814.1249  
www.cannondesign.com

**KPFF**  
Civil/Structural Engineer  
3131 Camino Del Rio N, Suite 1080  
San Diego, CA 92108  
619.521.8500

**GroundLevel Landscape Architecture, Inc.**  
Landscape Architect  
2605 State Street, Suite B  
San Diego, CA 92103  
619.325.1990

Rev.	Description	Date
	ISSUE FOR PLAN REVIEW	21 JAN 2022
	BACKCHECK	
	ISSUE FOR PLAN REVIEW	27 OCT 2021
	ISSUE FOR PLANNING	15 DEC 2020
	ISSUE FOR GRADING PERMIT	03 DEC 2020

Rev. Description Date  
AGENCY APPROVAL

ARCHITECT SEAL CONSULTANT SEAL

Matthew S. Greiner  
No. C27137  
Ren: 10-31-2023

Drawing Title:  
**OVERALL CAMPUS PLAN**

Issue Date: 01/21/2022  
Project No.: 006240.00 Checked by: Checker

# G0009

© 2019 The Cannon Corporation  
All rights reserved. No part of this document may be reproduced, stored in a retrieval system, or written authorization by The Cannon Corporation.  
1/21/2022 8:20:15 PM



Tri-City Medical Center

Tri-City Medical Center  
Psychiatric Health  
Facility

4802 Vista Way  
Oceanside, CA 92056

**CANNONDESIGN**

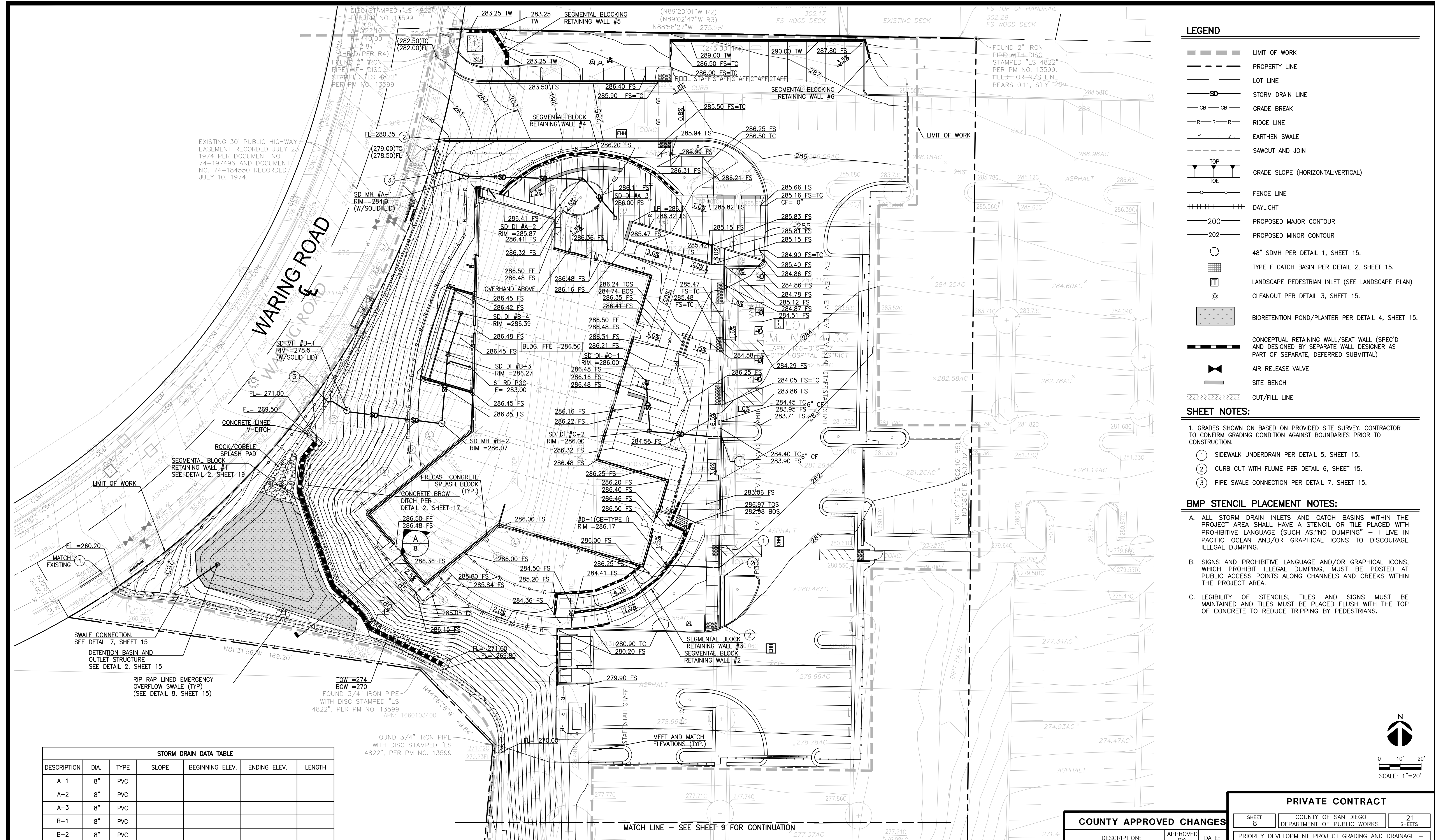
656 Fifth Avenue, Suite A  
San Diego, CA 92101  
P: 619.398.0215  
F: 619.814.1249

www.cannondesign.com

CIVIL & STRUCTURAL  
KPFF

**kpff**

700 South Flower Street  
Suite 2100  
Los Angeles, CA 90017  
O: 213.418.0201  
F: 213.266.5294  
www.kpff.com



**LEGEND**

- LIMIT OF WORK
- - - PROPERTY LINE
- - - LOT LINE
- SD STORM DRAIN LINE
- GB - GB GRADE BREAK
- R - R - R RIDGE LINE
- - - EARTHEN SWALE
- - - SAWCUT AND JOIN
- TOP TOE GRADE SLOPE (HORIZONTAL:VERTICAL)
- FENCE LINE
- ++++ DAYLIGHT
- 200 PROPOSED MAJOR CONTOUR
- 202 PROPOSED MINOR CONTOUR
- 48" SDMH PER DETAIL 1, SHEET 15.
- TYPE F CATCH BASIN PER DETAIL 2, SHEET 15.
- LANDSCAPE PEDESTRIAN INLET (SEE LANDSCAPE PLAN)
- CLEANOUT PER DETAIL 3, SHEET 15.
- BIORETENTION POND/PLANTER PER DETAIL 4, SHEET 15.
- CONCEPTUAL RETAINING WALL/SEAT WALL (SPEC'D AND DESIGNED BY SEPARATE WALL DESIGNER AS PART OF SEPARATE, DEFERRED SUBMITTAL)
- AIR RELEASE VALVE
- SITE BENCH
- CUT/FILL LINE

**SHEET NOTES:**

1. GRADES SHOWN ON BASED ON PROVIDED SITE SURVEY. CONTRACTOR TO CONFIRM GRADING CONDITION AGAINST BOUNDARIES PRIOR TO CONSTRUCTION.
- 1 SIDEWALK UNDERDRAIN PER DETAIL 5, SHEET 15.
- 2 CURB CUT WITH FLUME PER DETAIL 6, SHEET 15.
- 3 PIPE SWALE CONNECTION PER DETAIL 7, SHEET 15.

**BMP STENCIL PLACEMENT NOTES:**

- A. ALL STORM DRAIN INLETS AND CATCH BASINS WITHIN THE PROJECT AREA SHALL HAVE A STENCIL OR TILE PLACED WITH PROHIBITIVE LANGUAGE (SUCH AS: "NO DUMPING" - 1 LIVE IN PACIFIC OCEAN AND/OR GRAPHICAL ICONS TO DISCOURAGE ILLEGAL DUMPING.
- B. SIGNS AND PROHIBITIVE LANGUAGE AND/OR GRAPHICAL ICONS, WHICH PROHIBIT ILLEGAL DUMPING, MUST BE POSTED AT PUBLIC ACCESS POINTS ALONG CHANNELS AND CREEKS WITHIN THE PROJECT AREA.
- C. LEGIBILITY OF STENCILS, TILES AND SIGNS MUST BE MAINTAINED AND TILES MUST BE PLACED FLUSH WITH THE TOP OF CONCRETE TO REDUCE TRIPPING BY PEDESTRIANS.

STORM DRAIN DATA TABLE						
DESCRIPTION	DIA.	TYPE	SLOPE	BEGINNING ELEV.	ENDING ELEV.	LENGTH
A-1	8"	PVC				
A-2	8"	PVC				
A-3	8"	PVC				
B-1	8"	PVC				
B-2	8"	PVC				
B-3	8"	PVC				
B-4	8"	PVC				
C-1	8"	PVC				
C-2	8"	PVC				

COUNTY APPROVED CHANGES		
DESCRIPTION:	APPROVED BY:	DATE:

**PRIVATE CONTRACT**

SHEET 6 OF 21 SHEETS  
COUNTY OF SAN DIEGO  
DEPARTMENT OF PUBLIC WORKS

PRIORITY DEVELOPMENT PROJECT GRADING AND DRAINAGE - NORTH SHEET FOR:

**TRI-CITY MEDICAL CENTER  
PSYCHIATRIC HEALTH FACILITY  
CALIFORNIA COORDINATE INDEX 380-1700**

APPROVED FOR WILLIAM P. MORRIS  
COUNTY ENGINEER

ENGINEER OF WORK  
R.C.E. ZEVEA, PE  
No. 59894  
Exp. 3/31/23  
STATE OF CALIFORNIA  
CIVIL

GRADING PERMIT NO:  
PDS2021-LDGRMJ-30378

ENGINEER'S NAME: EVAN LAKIN  
PHONE NO. (213)266-5266 // EMAIL: EVAN.LAKIN@KPFF.COM

ARCHITECT SEAL

CONSULTANT SEAL

EVAN LAKIN, P.E.  
No. 59894  
Exp. 3/31/23  
STATE OF CALIFORNIA  
CIVIL

Drawing Title:  
**GRADING AND  
DRAINAGE - NORTH**

Issue Date: 12/15/2021  
Project No.: 006240.00 Checked by: ALJ/EL

**C1008**

© 2019 The Cannon Corporation  
All rights reserved. No part of this document may be reproduced, stored in a retrieval system, or transmitted in any form or by any means, electronic, mechanical, photocopying, recording, or by any information storage and retrieval system, without the prior written authorization by The Cannon Corporation.  
P:\2019\1900773 Tri-City Med Center Behavioral Health Facility\CAD\Sheets\C1008GR-DD.dwg, Jan 20, 2022, 1:42pm





Tri-City Medical Center

Tri-City Medical Center  
Psychiatric Health  
Facility

4002 Vista Way  
Oceanside, CA 92066

**CANNONDESIGN**

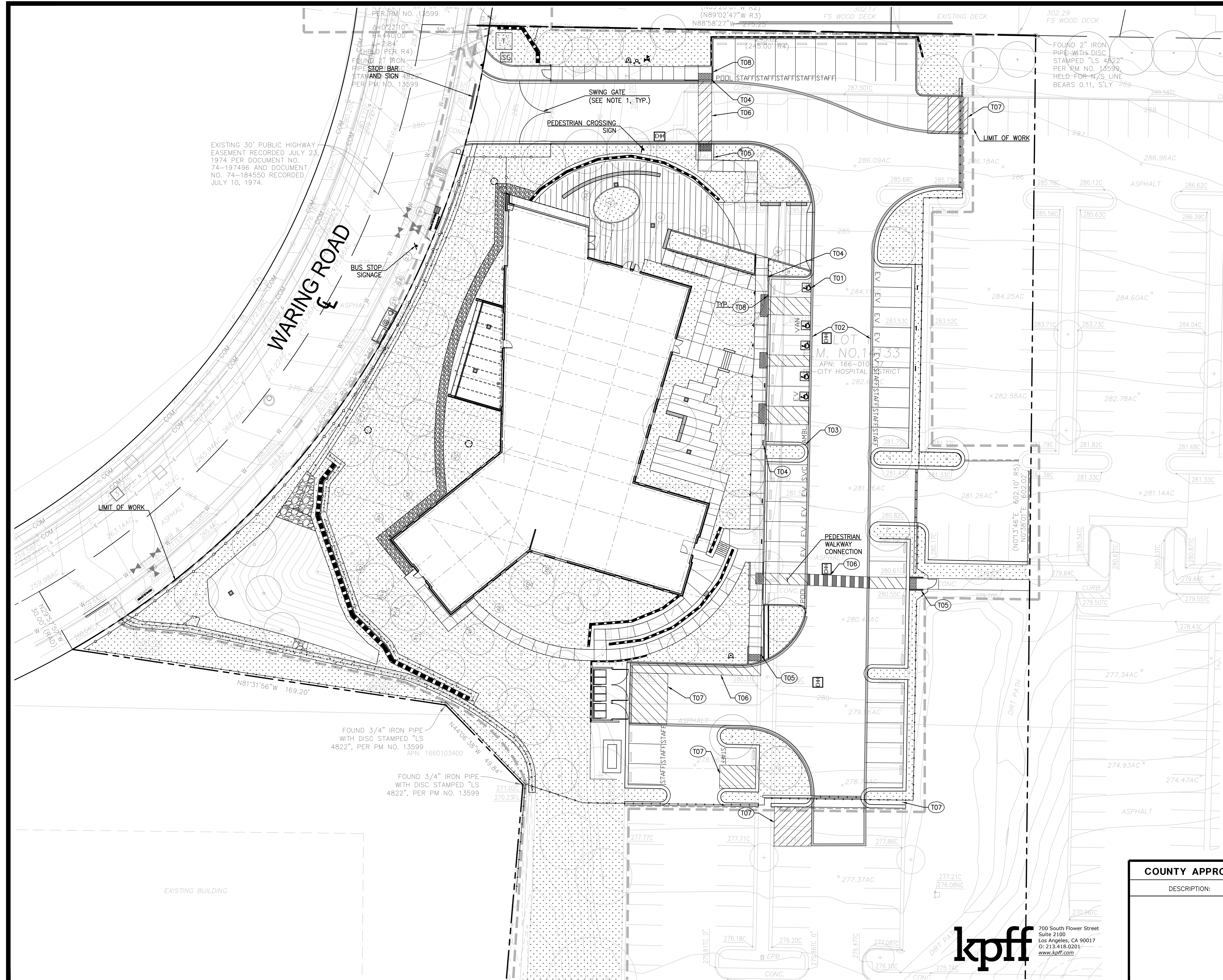
656 Fifth Avenue, Suite A  
San Diego, CA 92101  
P: 619.398.0215  
F: 619.814.1249

www.cannondesign.com

CIVIL & STRUCTURAL  
KPFF

**kpff**

700 South Flower Street  
Suite 2100  
Los Angeles, CA 90017  
O: 213.418.0201  
F: 213.266.5294  
www.kpff.com



**PAVING CONSTRUCTION NOTES**

- (T01) DISABLED PERSONS PARKING STALL STRIPING DETAIL 7 AND 8, SHEET 19.
- (T02) FIRE LANE SIGNAGE/STRIPING PER CITY OF OCEANSIDE FIRE MASTER PLAN ATTACHMENTS SEE SHEET 20 FOR DETAILS.
- (T03) 4" WIDE WHITE PARKING STALL STRIPE.
- (T04) TYPE C CURB RAMP, DETAIL 9, SHEET 19.
- (T05) TYPE D CURB RAMP, DETAIL 9, SHEET 18.
- (T06) STRIPED PEDESTRIAN CROSSWALK. SEE DETAIL 1, SHEET 18.
- (T07) STRIPED "NO PARKING" AREA. COLOR WHITE IS SUBSTITUTED FOR BLUE STRIPES PER SHEET NOTE T01.
- (T08) RAISED CURB WITH 45° CHAMFERED END TREATMENT. PER DETAIL 3, SHEET 18.

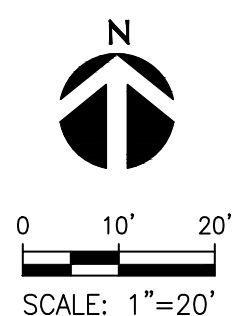
**LEGEND**

- LIMIT OF WORK
- PROPERTY LINE
- LOT LINE
- SAWCUT AND JOIN
- FIRE LANE STRIPING

**NOTES:**

1. FENCES/GATES LOCATED ALONG OR ON THE FIRE ACCESS SHALL BE SIGNED PER ATTACHMENT 16 OF THE OCEANSIDE FIRE DEPARTMENT FIRE MASTER PLAN.
2. PAVEMENT MARKINGS SHALL FOLLOW CALTRANS STANDARD PLAN RSP A24E.

- 43 PATIENT/VISITORS STALLS REQUIRED FOR BUILDING
- 25 GENERAL
- 10 EV STALLS REQUIRED (5 W/ CHARGERS)
- 1 EA "SIGNED ADA EV STALL (1 CHARGER)
- 2 POOL STALLS
- 5 ADA STALLS PROVIDED
- 1 AMBULANCE PARKING
- 8 STAFF STALLS
- 134 PRECONSTRUCTION STALLS



COUNTY APPROVED CHANGES		
DESCRIPTION:	APPROVED BY:	DATE:

**PRIVATE CONTRACT**

SHEET 13 OF 21 SHEETS  
COUNTY OF SAN DIEGO  
DEPARTMENT OF PUBLIC WORKS

PRIORITY DEVELOPMENT PROJECT TRAFFIC SIGNAGE AND STRIPING SHEET FOR:

**TRI-CITY MEDICAL CENTER  
PSYCHIATRIC HEALTH FACILITY**  
CALIFORNIA COORDINATE INDEX 380-1700

APPROVED FOR WILLIAM P. MORGAN  
COUNTY ENGINEER

ENGINEER OF WORK  
R.C.E. ZEFF AWAZA, PE  
C.E. 51084

GRADING PERMIT NO:  
PDS2021-LDGRMJ-30378

ENGINEER'S NAME: EVAN LAKIN  
PHONE NO. (213)266-5266 // EMAIL: EVAN.LAKIN@KPFF.COM

Rev.	Description	Date

ARCHITECT SEAL

CONSULTANT SEAL

Drawing Title:  
**TRAFFIC SIGNAGE AND STRIPING PLAN**

Issue Date: 12/15/2021  
Project No.: 006240.00 Checked by: AL/EL

**C1013**

© 2019 The Cannon Corporation  
All rights reserved. No part of this document may be reproduced, stored in a retrieval system, or written authorization by The Cannon Corporation.  
P:20191900773 Tri-City Medical Center Behavioral Health Facility's CAD Sheets, Checklist 1900773-C1013STD.DWG, Jan 20, 2022, 1:45pm

PERMANENT BMP\_TEMPLATE (REV. 7/6/2017)



**Tri-City Medical Center**  
**Psychiatric Health Facility**

4002 Vista Way  
 Oceanside, CA 92056

**CANNONDESIGN**

656 Fifth Avenue, Suite A  
 San Diego, CA 92101  
 P: 619.398.0215  
 F: 619.814.1249

www.cannondesign.com

**CIVIL & STRUCTURAL**  
**KPFF**

**kpff**

700 South Flower Street  
 Suite 2100  
 Los Angeles, CA 90017  
 O: 213.418.0201  
 F: 213.266.5294  
 www.kpff.com

ISSUE FOR PLAN REVIEW 21 JAN 2022  
 BACKCHECK 27 OCT 2021  
 ISSUE FOR PLANNING 15 DEC 2020  
 ISSUE FOR GRADING PERMIT 03 DEC 2020

Rev.	Description	Date
1	AGENCY APPROVAL	

ARCHITECT SEAL CONSULTANT SEAL



ENGINEER'S NAME: EVAN LAKIN  
 PHONE NO. (213)266-5266 // EMAIL: EVAN.LAKIN@KPFF.COM

Drawing Title: **DETAILS**

Issue Date: 12/15/2021  
 Project No.: 006240.00 Checked by: ALJ/EL

**C1020**

Oceanside Fire Department Prevention Division FIRE MASTER PLAN 5205-17

**XI. Attachment 11 – Specifications for Alternate Location of Towing Company Information**

300 N. Coast Highway, Oceanside, CA 92054  
 760-435-4101  
 www.oceanside.ca.us/gov/fire Page 29 of 37

Oceanside Fire Department Prevention Division FIRE MASTER PLAN 5205-17

**X. Attachment 10 – Fire Lane Entrance Signs**

To be used only at vehicle entry points to areas that contain "Fire Lane - No Parking" signs or red curbs.

300 N. Coast Highway, Oceanside, CA 92054  
 760-435-4101  
 www.oceanside.ca.us/gov/fire Page 28 of 37

Oceanside Fire Department Prevention Division FIRE MASTER PLAN 5205-17

**IX. Attachment 9 – Fire Lane Curb Identification**

300 N. Coast Highway, Oceanside, CA 92054  
 760-435-4101  
 www.oceanside.ca.us/gov/fire Page 27 of 37

Oceanside Fire Department Prevention Division FIRE MASTER PLAN 5205-17

**XIV. Attachment 14 – Mounting Specifications for Fire Lane Entrance and No Parking Signs**

300 N. Coast Highway, Oceanside, CA 92054  
 760-435-4101  
 www.oceanside.ca.us/gov/fire Page 32 of 37

Oceanside Fire Department Prevention Division FIRE MASTER PLAN 5205-17

**XIII. Attachment 13 – Fire Lane No Parking Sign Locations**

300 N. Coast Highway, Oceanside, CA 92054  
 760-435-4101  
 www.oceanside.ca.us/gov/fire Page 31 of 37

Oceanside Fire Department Prevention Division FIRE MASTER PLAN 5205-17

**XII. Attachment 12 – Specifications for Fire Lane No Parking Sign**

300 N. Coast Highway, Oceanside, CA 92054  
 760-435-4101  
 www.oceanside.ca.us/gov/fire Page 30 of 37

**CHAIN LINK FENCE DETAILS**

300 N. Coast Highway, Oceanside, CA 92054  
 760-435-4101  
 www.oceanside.ca.us/gov/fire Page 26 of 37

Revision	By	Approved	Date
ORIGINAL	Kerschhoff		12/7/20
Revised	D. Gerschhoff		09/15
Reviewed	D. Gerschhoff		10/18

RECOMMENDED BY THE SAN DIEGO REGIONAL STANDARDS COMMITTEE

Chairperson: R.C.E. 19248 Date: 10/26/2019

DRAWING NUMBER: M-20

**3 CHAIN LINK FENCE DETAILS**  
 - N.T.S.

300 N. Coast Highway, Oceanside, CA 92054  
 760-435-4101  
 www.oceanside.ca.us/gov/fire Page 25 of 37

**2 CHAIN LINK FENCE**  
 - N.T.S.

PERMANENT BMP\_TEMPLATE (REV. 7/6/2017)

**COUNTY APPROVED CHANGES**

DESCRIPTION:	APPROVED BY:	DATE:

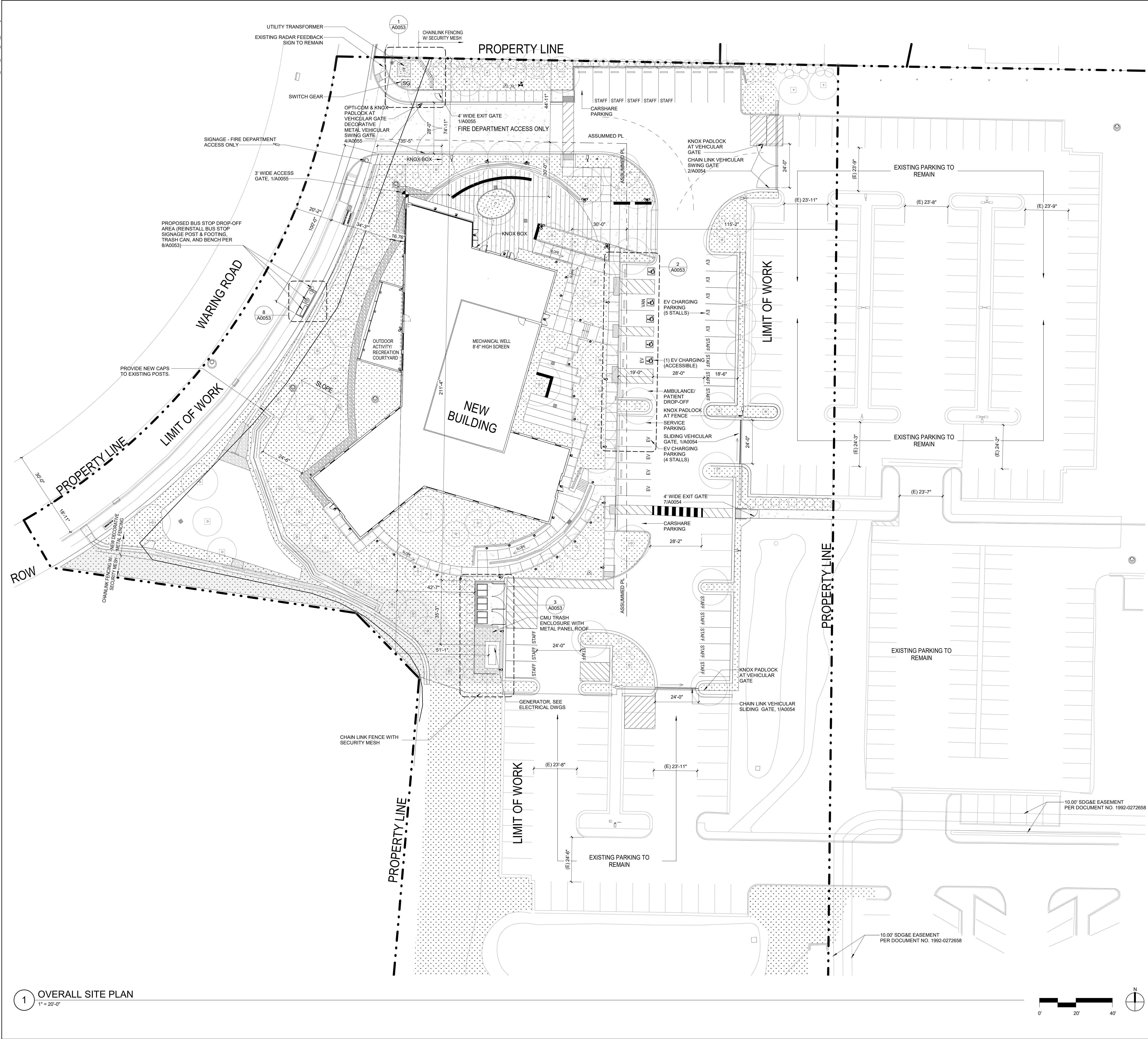
**PRIVATE CONTRACT**

SHEET 20	COUNTY OF SAN DIEGO DEPARTMENT OF PUBLIC WORKS	21 SHEETS
PRIORITY DEVELOPMENT PROJECT DETAILS SHEET FOR:		
TRI-CITY MEDICAL CENTER PSYCHIATRIC HEALTH FACILITY CALIFORNIA COORDINATE INDEX 380-1700		
APPROVED FOR WILLIAM P. MORGAN COUNTY ENGINEER	ENGINEER OF WORK R.C.E. 23084	GRADING PERMIT NO: PDS2021-LDGRMJ-30378

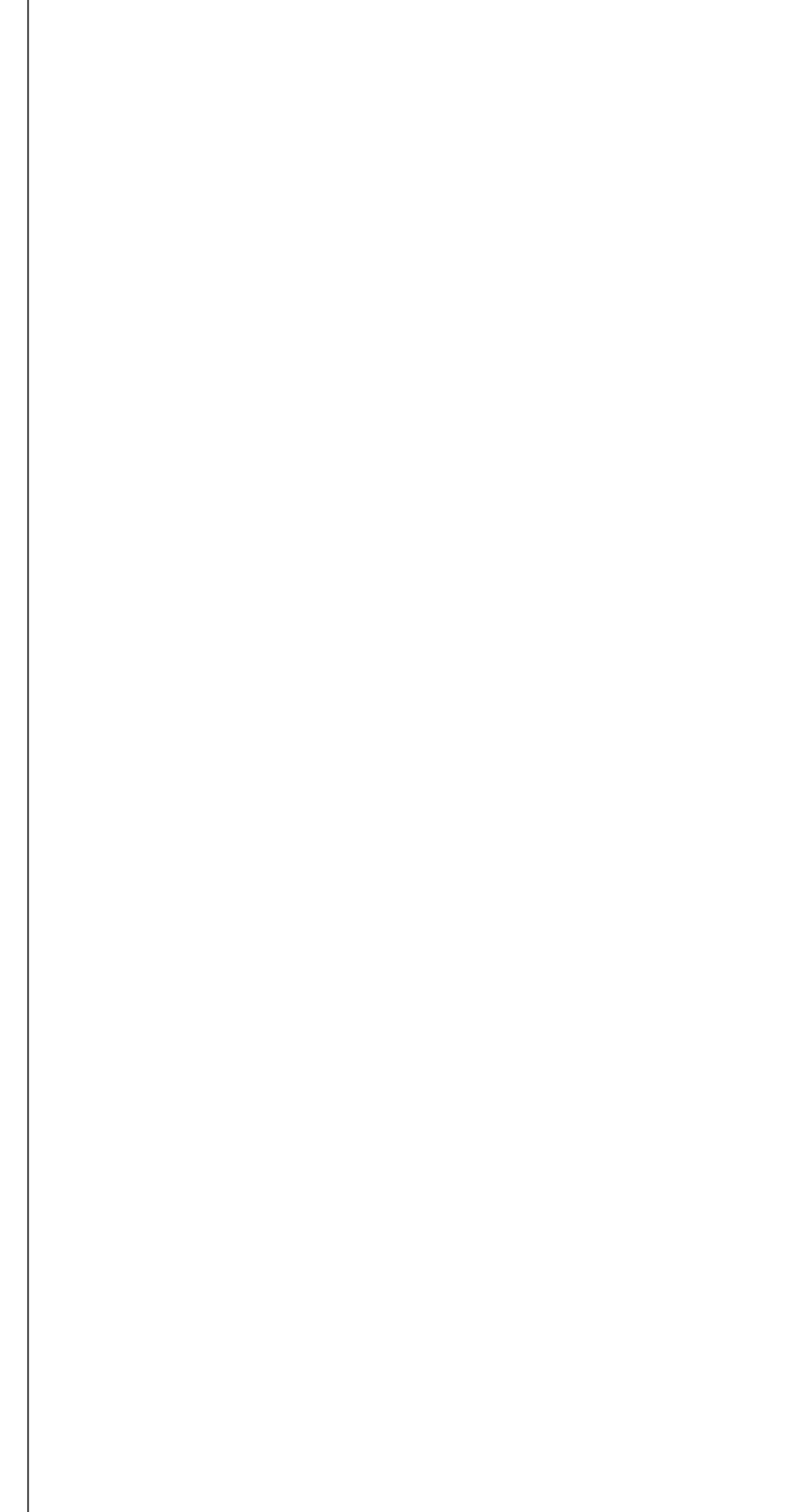


700 South Flower Street  
 Suite 2100  
 Los Angeles, CA 90017  
 O: 213.418.0201  
 www.kpff.com

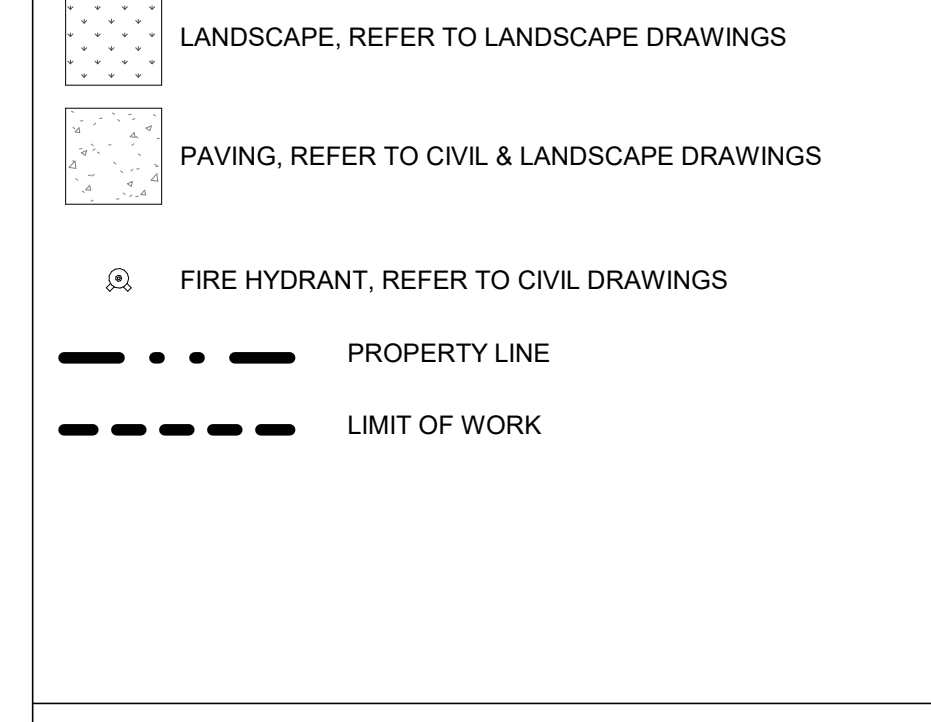
C:\Bentl Local Files\CTC\_PHE\_Site\_AR\_Plan\pantagook.rvt



KEYNOTES



LEGEND



GENERAL NOTE

- 1. REFER TO LANDSCAPE AND CIVIL DRAWINGS FOR ADDITIONAL SITE WORK INFORMATION AND DIMENSIONING.
2. CONTRACTOR TO PROVIDE OPTI-COM FOR EMERGENCY ACCESS GATES.
3. PRIOR TO DELIVERY OF COMBUSTIBLE MATERIALS OR START OF COMBUSTIBLE CONSTRUCTION, CONTRACTOR TO VERIFY THE APPROVED, PERMANENT WATER SUPPLY (FIRE HYDRANTS) MUST BE INSTALLED, TESTED AND PLACED IN SERVICE PRIOR TO DELIVERY OF COMBUSTIBLE MATERIALS OR START OF COMBUSTIBLE CONSTRUCTION.
4. OWNER TO PROVIDE NEW BUILDING ADDRESS SIGNAGE ON EXISTING MARQUEE AT MAIN ENTRANCE ON VISTA WAY. ADDRESS MUST BE CLEARLY VISIBLE AND LEGIBLE.
5. OWNER TO PROVIDE ADEQUATE RADIO COVERAGE ON THE 800MHZ COUNTRYWIDE COMMUNICATION SYSTEM. WHEN TESTED, IF THE 800MHZ SIGNAL STRENGTH READINGS FALL BELOW 65 IN ANY PORTION OF THE BUILDING, EITHER ABOVE OR BELOW GRADE AS MEASURED BY AN 800 MHZ PORTABLE RADIO, THE PURCHASE AND INSTALLATION OF ONE OR MORE BI-DIRECTIONAL AMPLIFIER RADIO COVERAGE ENHANCER IS REQUIRED.
6. CONTRACTOR TO COORDINATE PRE-CON MEETING PRIOR TO COMBUSTIBLE MATERIALS DROPPED ON SITE.

Tri-City Medical Center
Psychiatric Health Facility
4002 Vista Way
Oceanside, CA 92056

CANNONDESIGN
656 Fifth Avenue, Suite A
San Diego, CA 92101
P: 619.398.0215
F: 619.814.1249

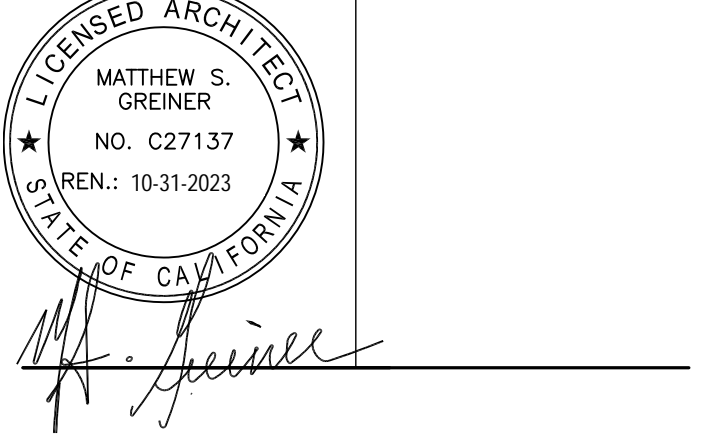
KPFF
Civil/Structural Engineer
3131 Camino Del Rio N, Suite 1080
San Diego, CA 92108
619.521.8500

GroundLevel Landscape Architecture, Inc.
Landscape Architect
2605 State Street, Suite B
San Diego, CA 92103
619.325.1990

Table with columns: Rev., Description, Date. Includes entries for plan review and permit dates.

AGENCY APPROVAL

ARCHITECT SEAL CONSULTANT SEAL



Drawing Title: OVERALL SITE PLAN

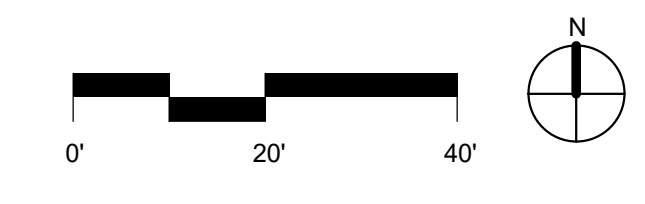
Issue Date: 01/21/2022
Project No.: 006240.00 Checked by: Checker

A0051

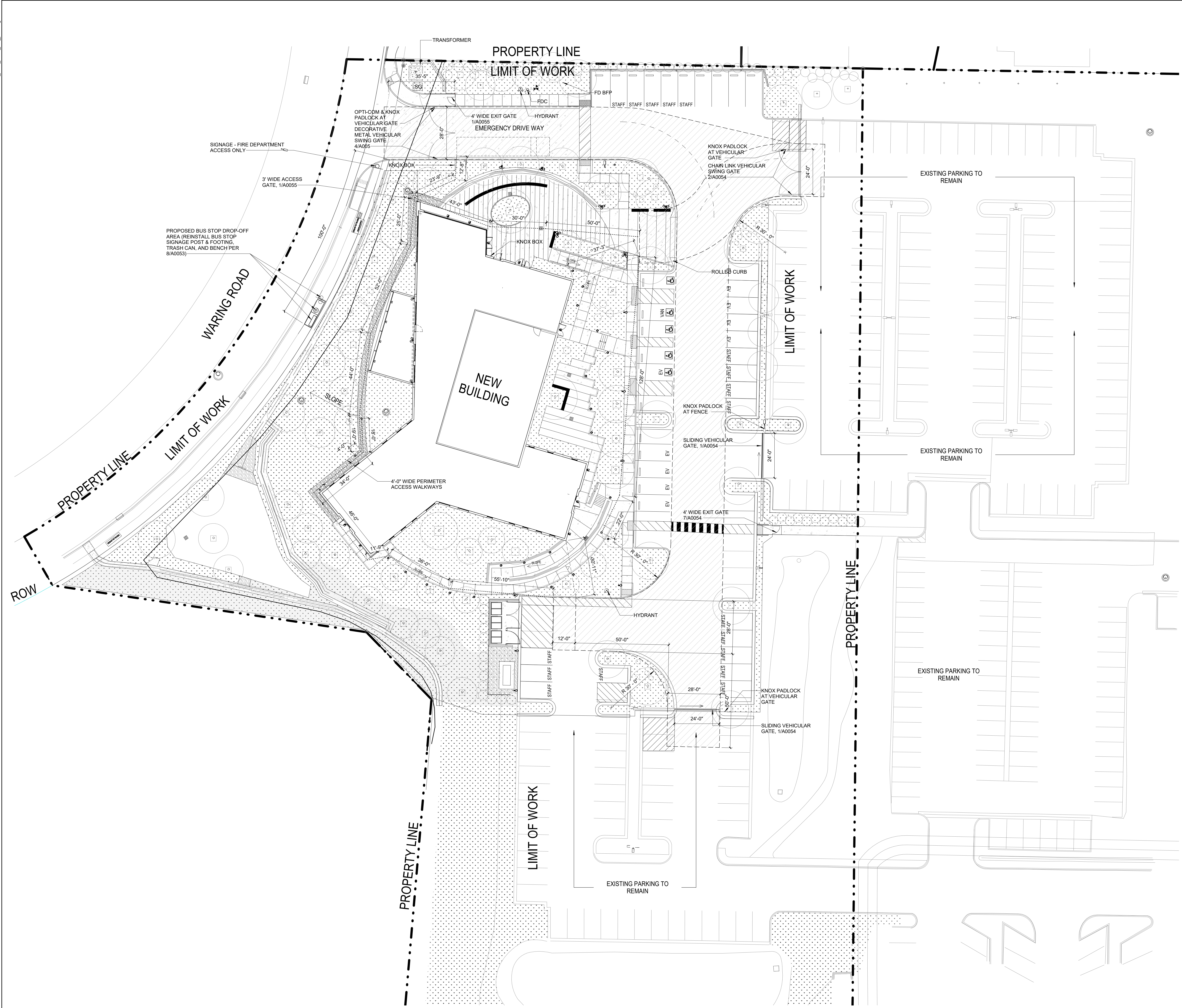
PARKING ANALYSIS table with columns for category, provided spaces, and required spaces. Includes sub-table for PARKING SUMMARY.

1 OVERALL SITE PLAN
1" = 20'-0"

© 2019 The Cannon Corporation
All rights reserved. No part of this document may be reproduced, stored in a retrieval system, or transmitted in any form or by any means, electronic, mechanical, photocopying, recording, or by any information storage and retrieval system, without the prior written authorization by The Cannon Corporation.
1/21/2022 10:56:49 AM



C:\Users\Local\Files\TC\_PHE\_SITE\_AR\_pantangoak.rvt



**LEGEND**

- LANDSCAPE, REFER TO LANDSCAPE DRAWINGS
- FIRE HYDRANT, REFER TO CIVIL DRAWINGS
- FIRE TRUCK ACCESS
- FIRE HOSE PULL

**LEGEND**

- LANDSCAPE, REFER TO LANDSCAPE DRAWINGS
- PAVING, REFER TO CIVIL & LANDSCAPE DRAWINGS
- FIRE HYDRANT, REFER TO CIVIL DRAWINGS
- PROPERTY LINE
- LIMIT OF WORK

**GENERAL NOTE**

- REFER TO LANDSCAPE AND CIVIL DRAWINGS FOR ADDITIONAL SITE WORK INFORMATION AND DIMENSIONING.
- CONTRACTOR TO PROVIDE OPTI-COM FOR EMERGENCY ACCESS GATES.
- PRIOR TO DELIVERY OF COMBUSTIBLE MATERIALS OR START OF COMBUSTIBLE CONSTRUCTION, CONTRACTOR TO VERIFY THE APPROVED, PERMANENT WATER SUPPLY (FIRE HYDRANTS) MUST BE INSTALLED, TESTED AND PLACED IN SERVICE PRIOR TO DELIVERY OF COMBUSTIBLE MATERIALS OR START OF COMBUSTIBLE CONSTRUCTION.
- OWNER TO PROVIDE NEW BUILDING ADDRESS SIGNAGE ON EXISTING MARQUEE AT MAIN ENTRANCE ON VISTA WAY. ADDRESS MUST BE CLEARLY VISIBLE AND LEGIBLE.
- OWNER TO PROVIDE ADEQUATE RADIO COVERAGE ON THE 800MHZ COUNTRYWIDE COMMUNICATION SYSTEM. WHEN TESTED, IF THE 800MHZ SIGNAL STRENGTH READINGS FALL BELOW 65 IN ANY PORTION OF THE BUILDING, EITHER ABOVE OR BELOW GRADE AS MEASURED BY AN 800 MHZ PORTABLE RADIO, THE PURCHASE AND INSTALLATION OF ONE OR MORE BIDIRECTIONAL AMPLIFIER RADIO COVERAGE ENHANCER IS REQUIRED.
- CONTRACTOR TO COORDINATE PRE-CON MEETING PRIOR TO COMBUSTIBLE MATERIALS DROPPED ON SITE.

**Tri-City Medical Center**  
 Tri-City Medical Center  
 Psychiatric Health  
 Facility  
 4002 Vista Way  
 Oceanside, CA 92056

**CANNONDESIGN**  
 656 Fifth Avenue, Suite A  
 San Diego, CA 92101  
 P: 619.398.0215  
 F: 619.814.1249  
 www.cannondesign.com

**KPFF**  
 Civil/Structural Engineer  
 3131 Camino Del Rio N, Suite 1080  
 San Diego, CA 92108  
 619.521.8500

**GroundLevel Landscape Architecture, Inc.**  
 Landscape Architect  
 2605 State Street, Suite B  
 San Diego, CA 92103  
 619.325.1990

Rev.	Description	Date
	ISSUE FOR PLAN REVIEW BACKCHECK	21 JAN 2022
	ISSUE FOR PLAN REVIEW	27 OCT 2021
	ISSUE FOR PLANNING	15 DEC 2020
	ISSUE FOR GRADING PERMIT	03 DEC 2020

Rev.	Description	Date
	AGENCY APPROVAL	

ARCHITECT SEAL      CONSULTANT SEAL

Drawing Title:  
**FIRE ACCESS SITE PLAN**

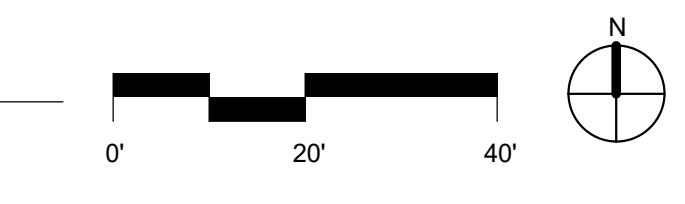
Issue Date: 01/21/2022  
 Project No.: 006240.00      Checked by: Checker

**A0052**

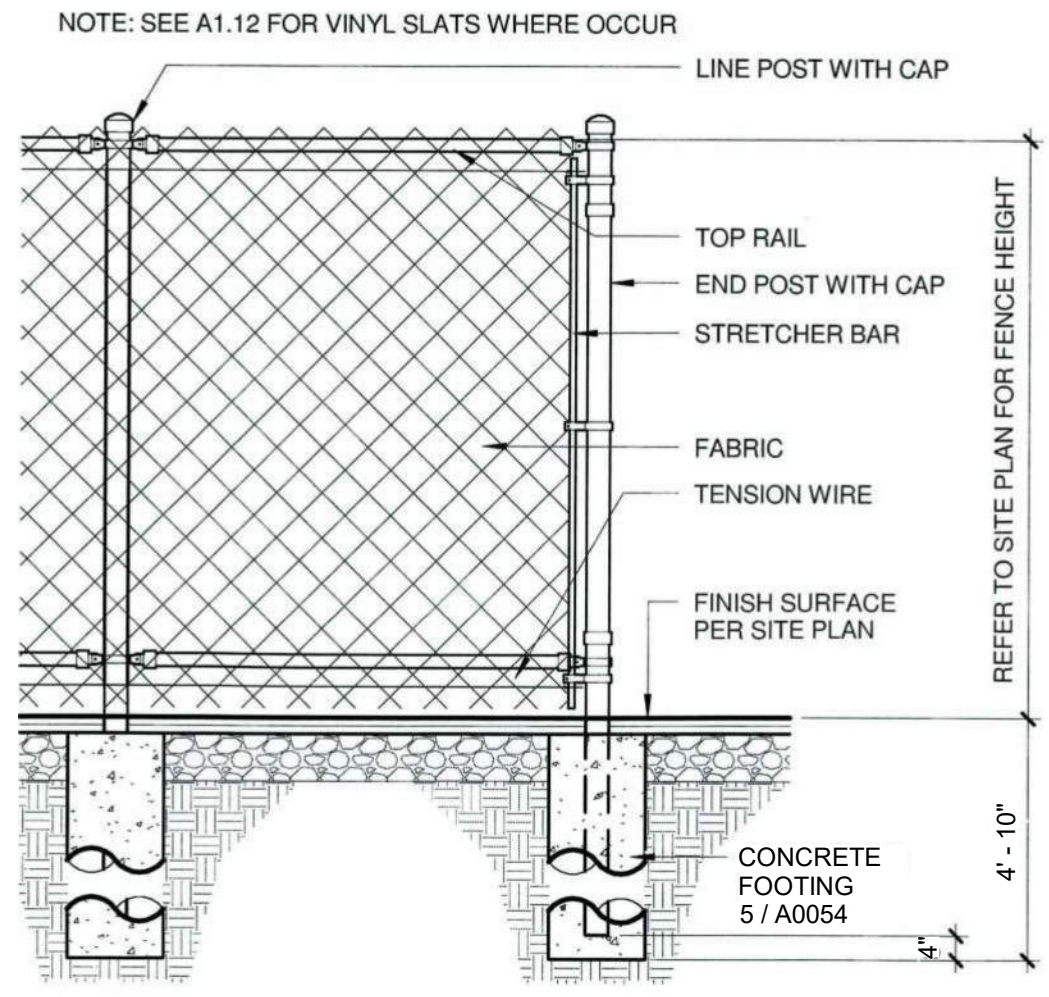
© 2019 The Cannon Corporation

© 2019 The Cannon Corporation  
 All rights reserved. No part of this document may be reproduced, stored in a retrieval system, or transmitted in any form or by any means, electronic, mechanical, photocopying, recording, or by any information storage and retrieval system, without written authorization by The Cannon Corporation.  
 1/21/2022 10:48:48 AM

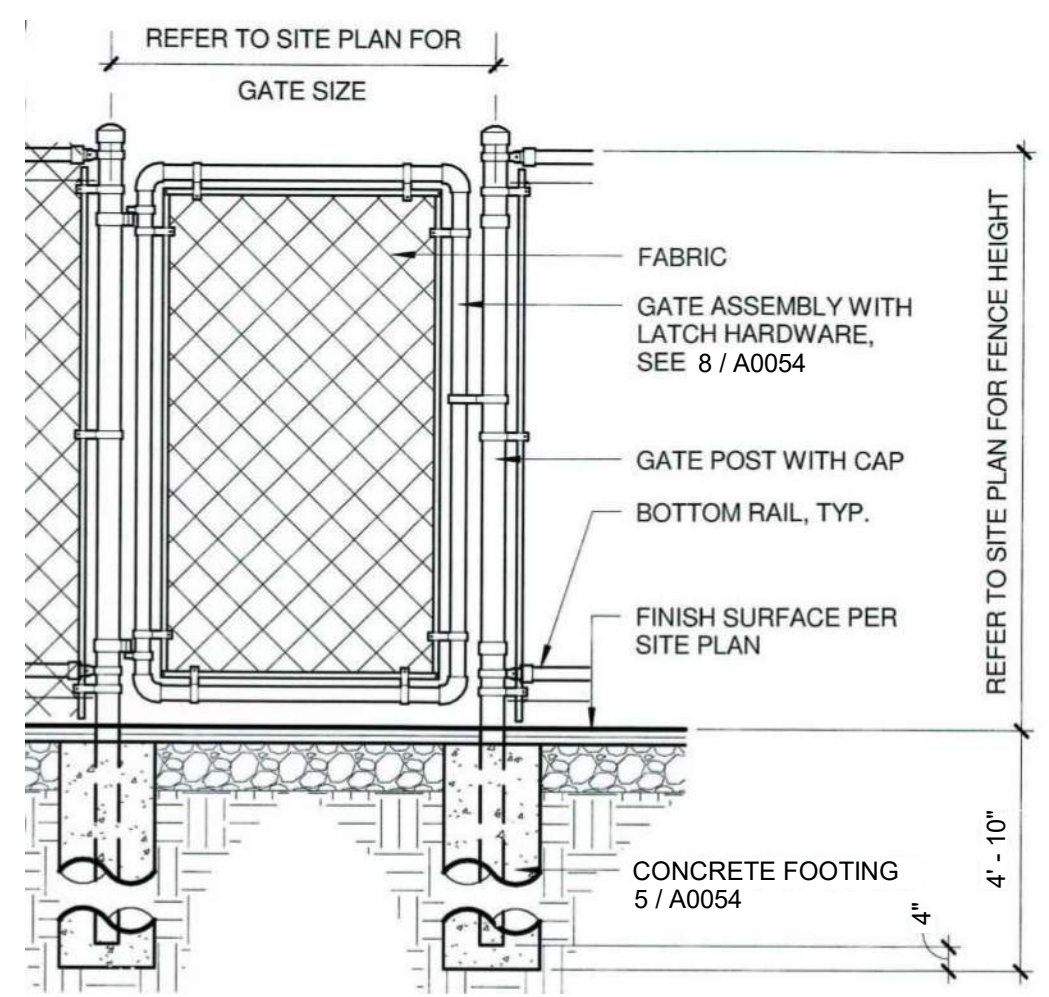
**1** FIRE ACCESS SITE PLAN  
 1" = 20'-0"



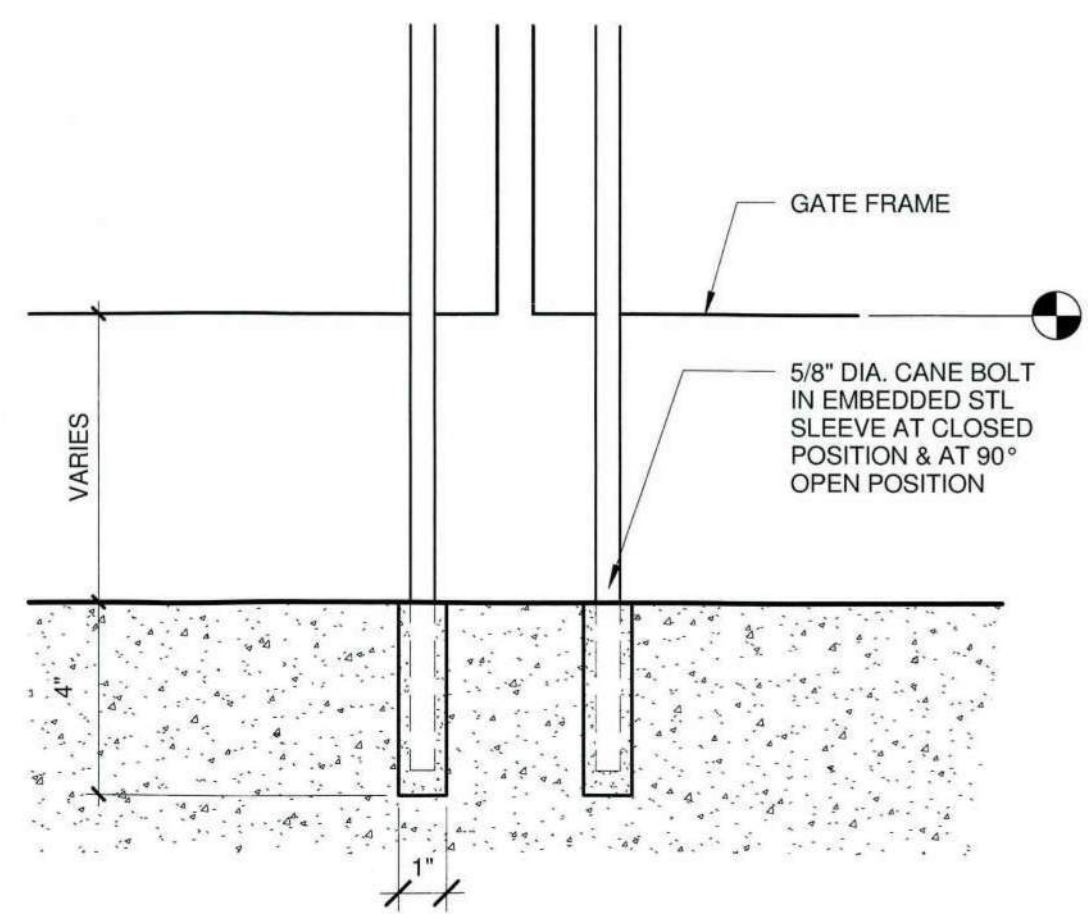
C:\Revit Local Files\TC\_PHF\_AR\_memo\A0054.rvt



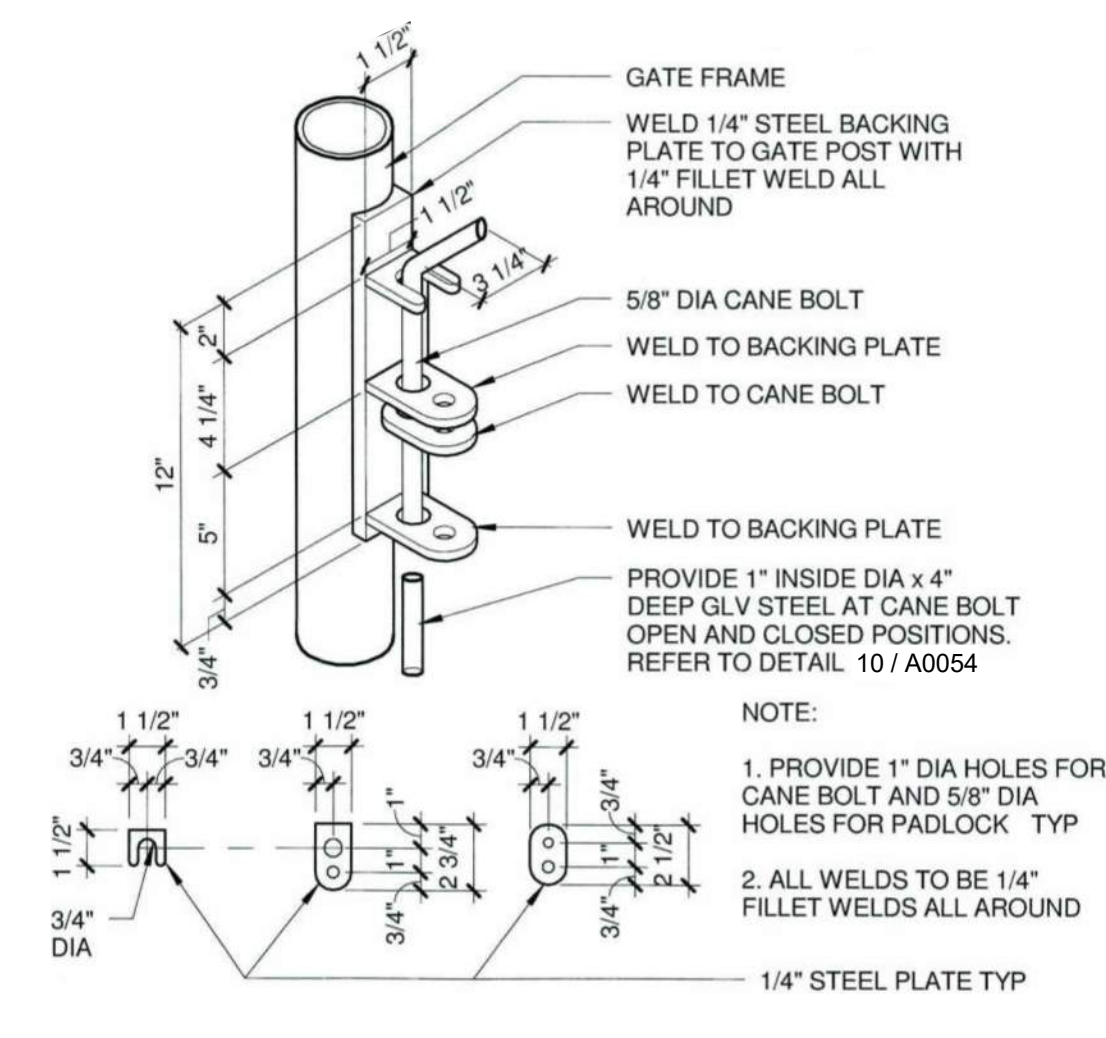
11 CHAIN LINK FENCE  
3" = 1'-0"



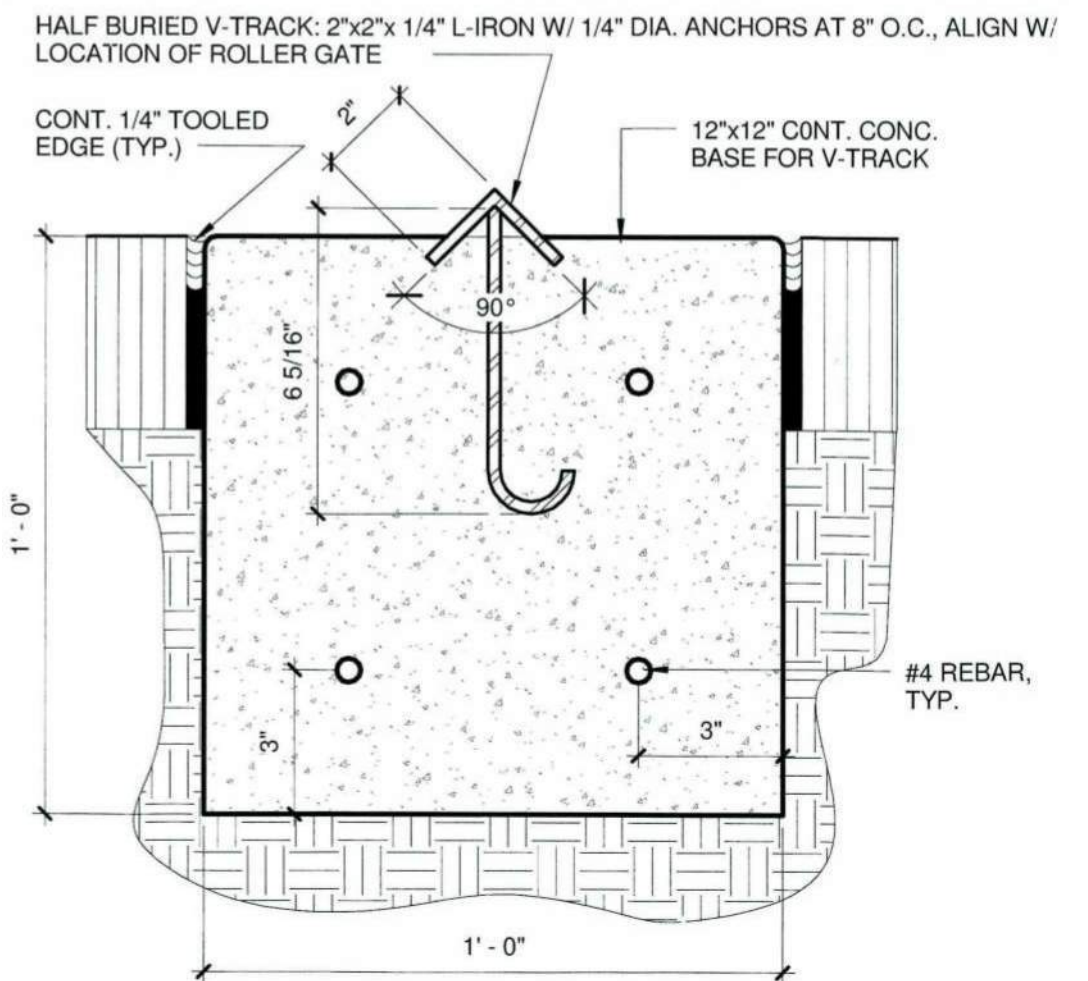
7 CHAIN LINK GATE  
1/2" = 1'-0"



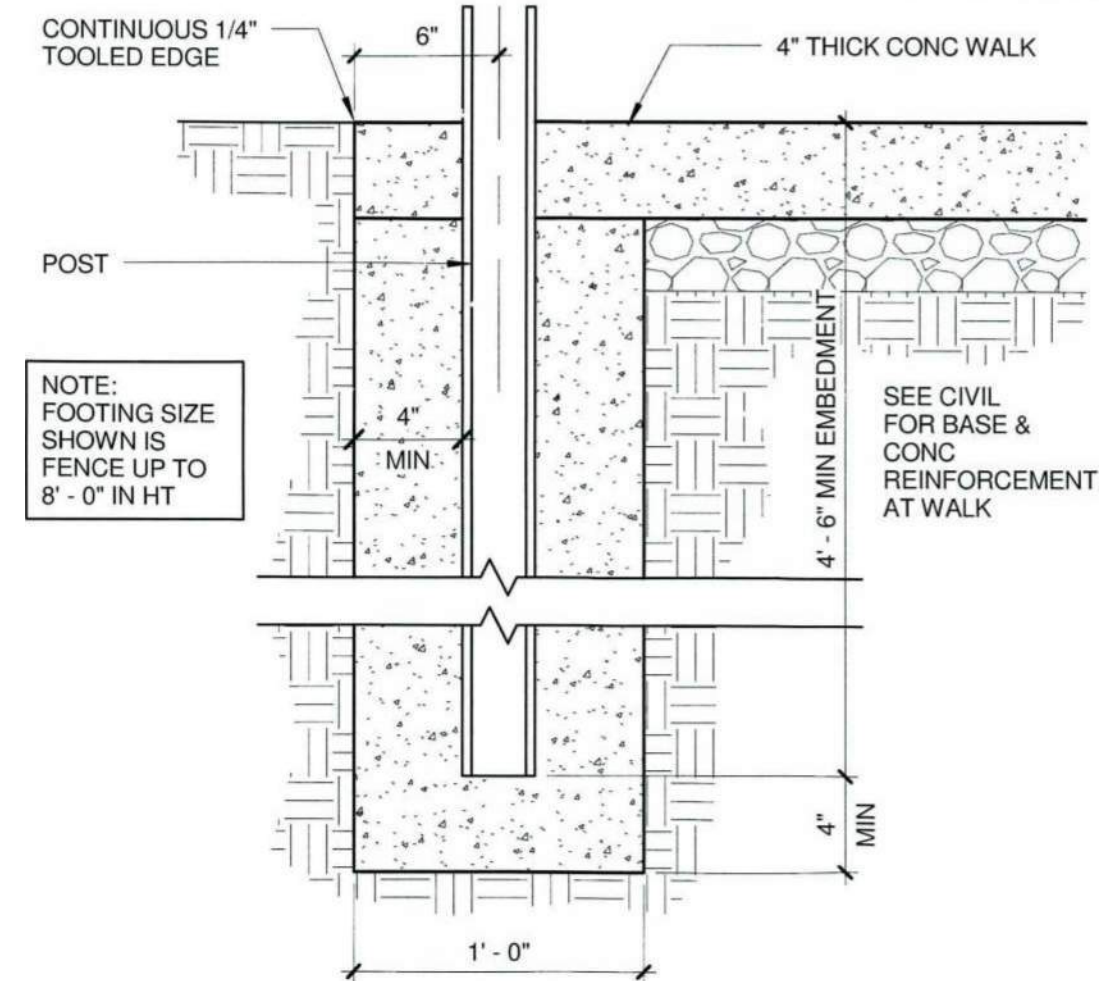
10 GATE LATCH  
3" = 1'-0"



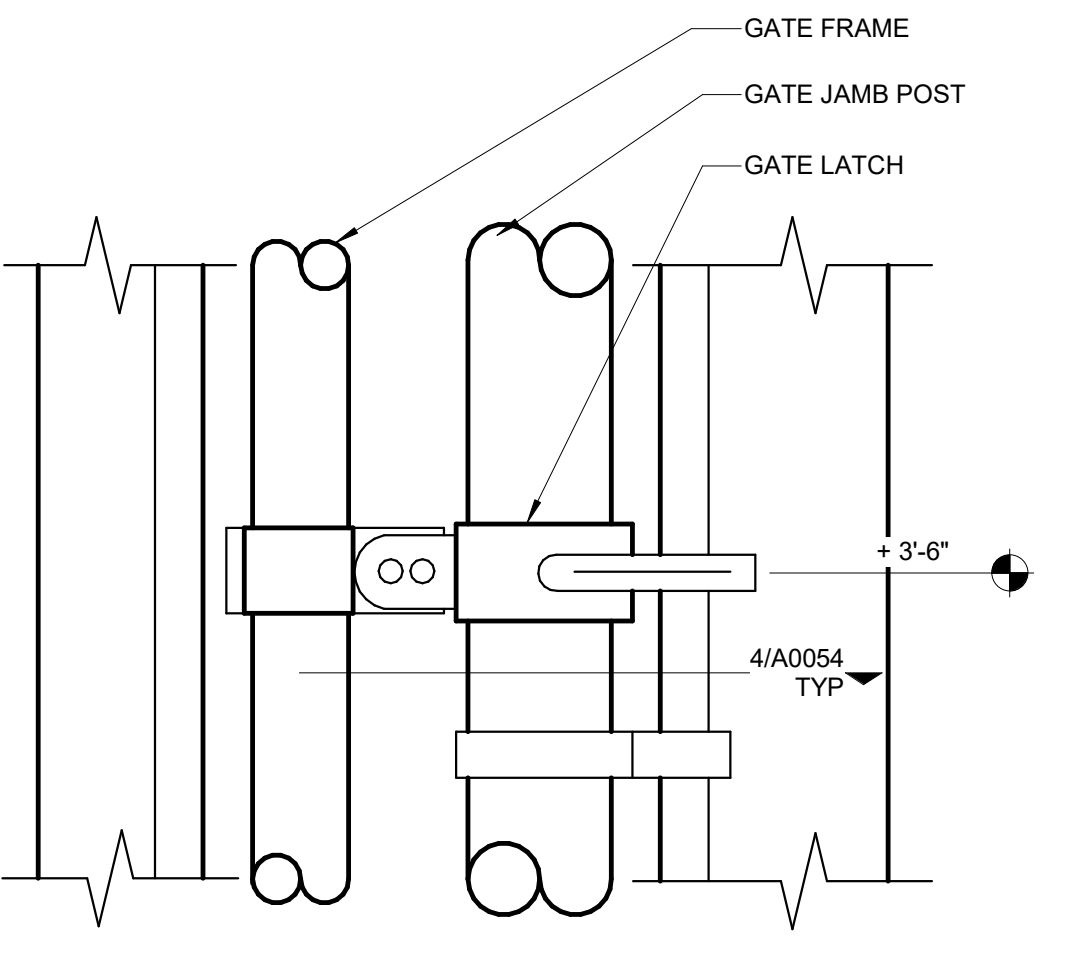
6 CANE BOLT  
1 1/2" = 1'-0"



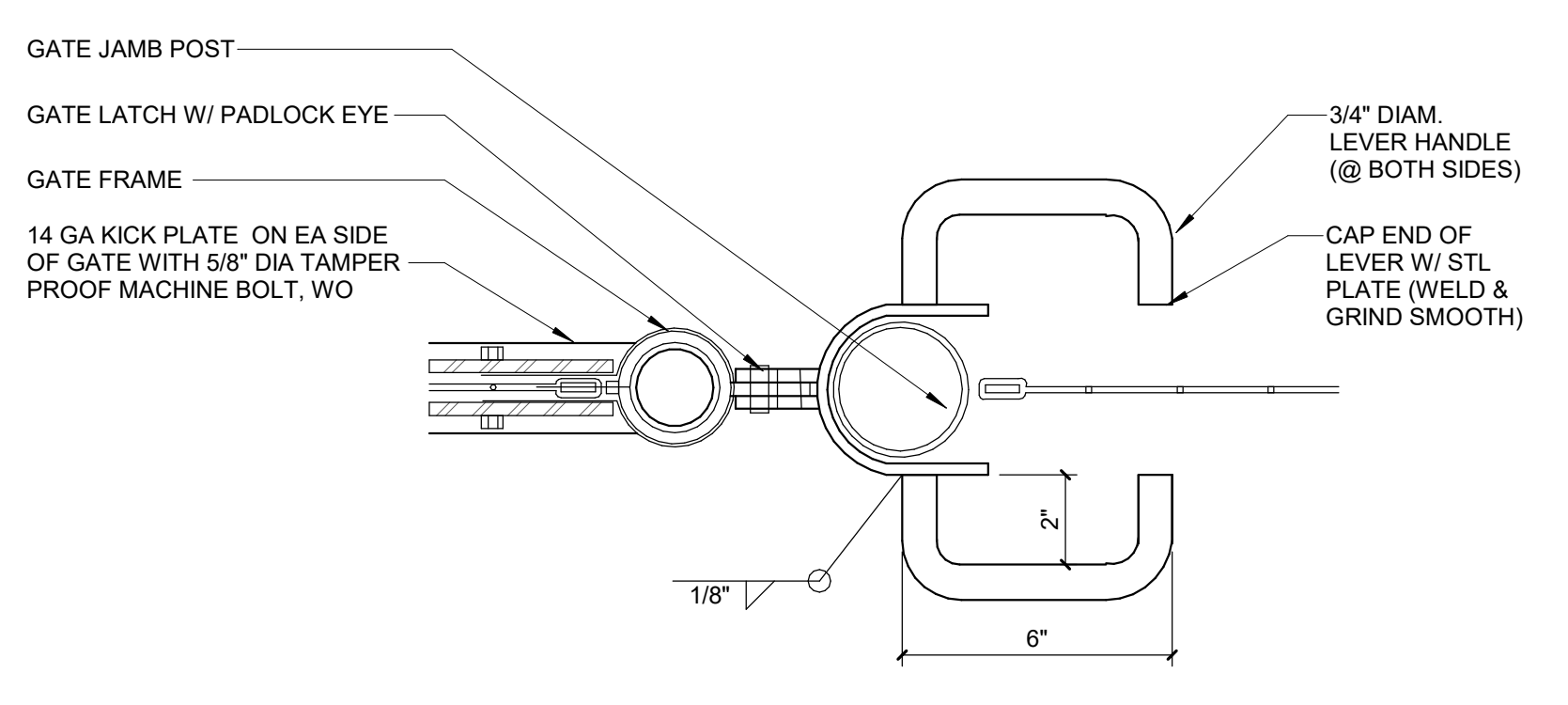
9 V-TRACK  
3" = 1'-0"



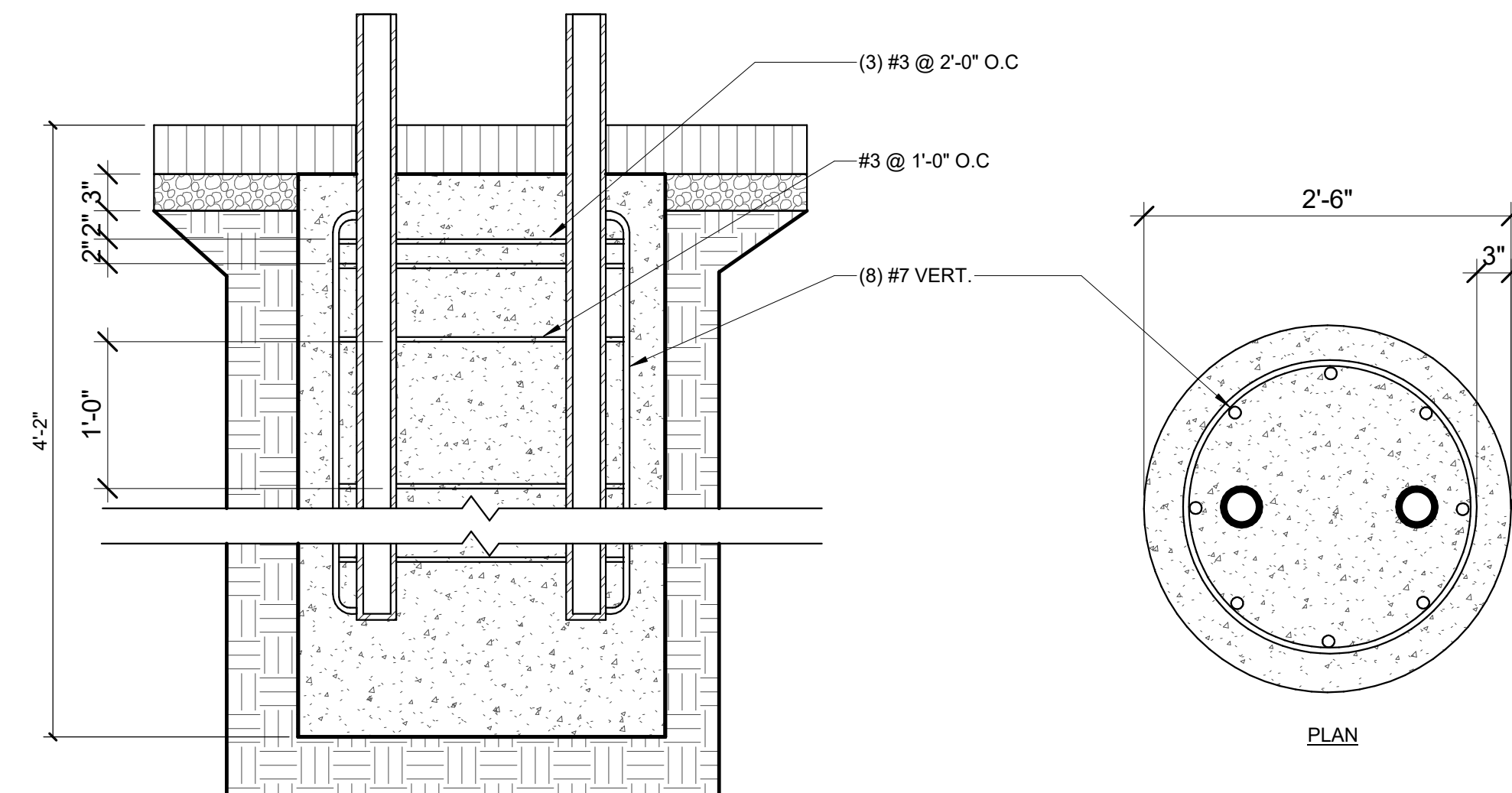
5 FENCE POST & FTG.  
1 1/2" = 1'-0"



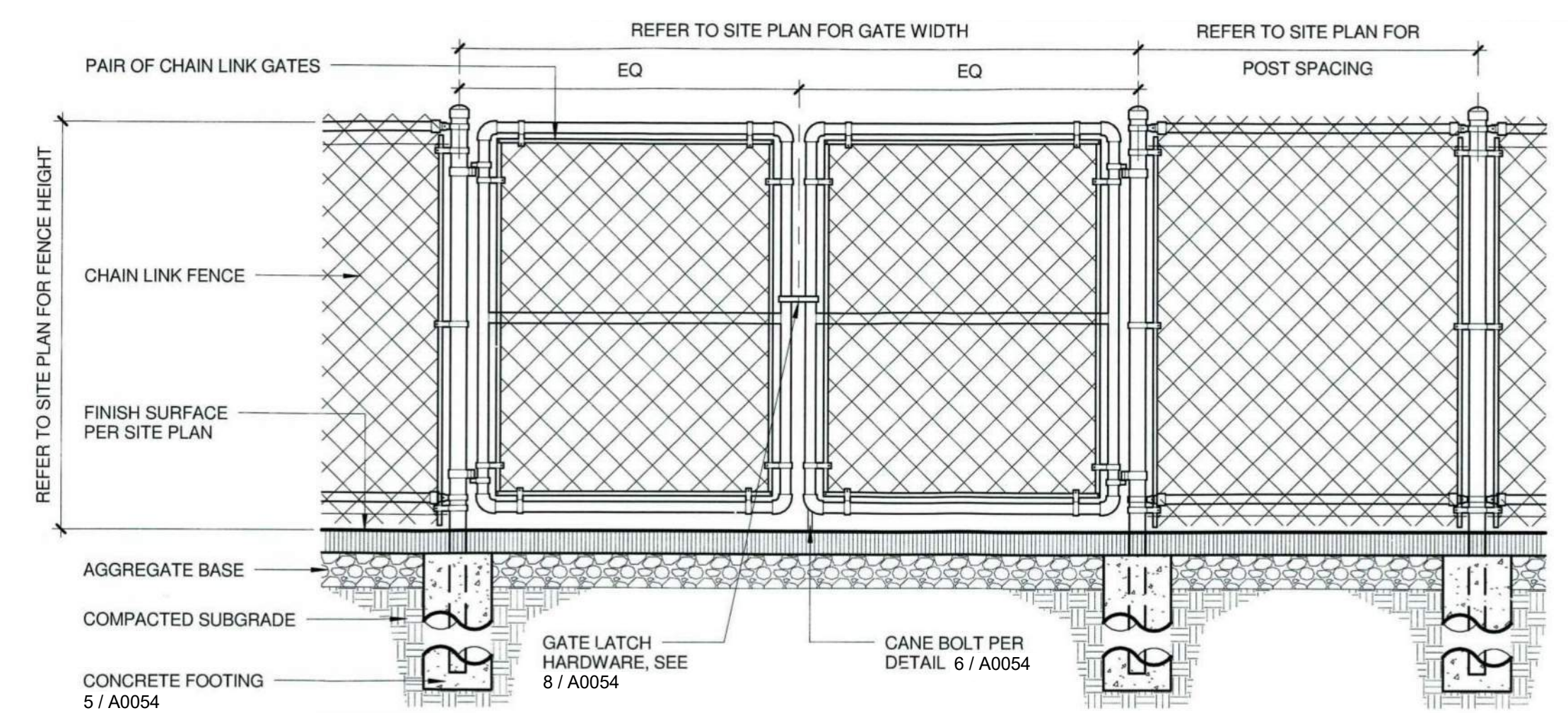
8 ACC. GATE LATCH  
3" = 1'-0"



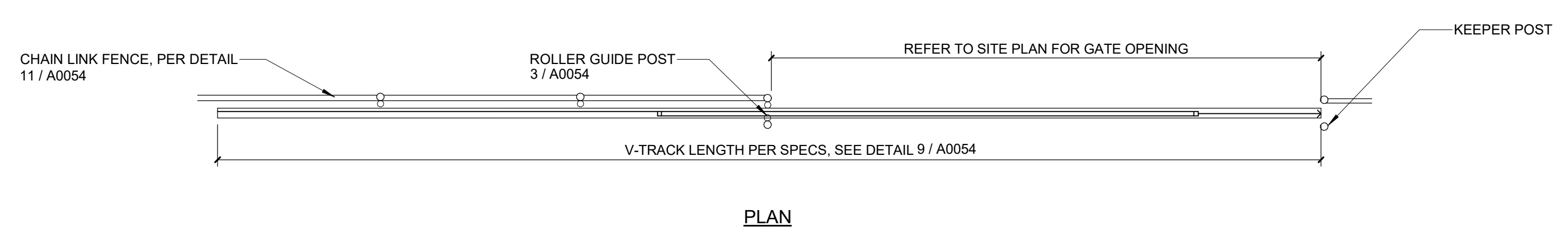
4 ACC. GATE LATCH PLAN  
3" = 1'-0"



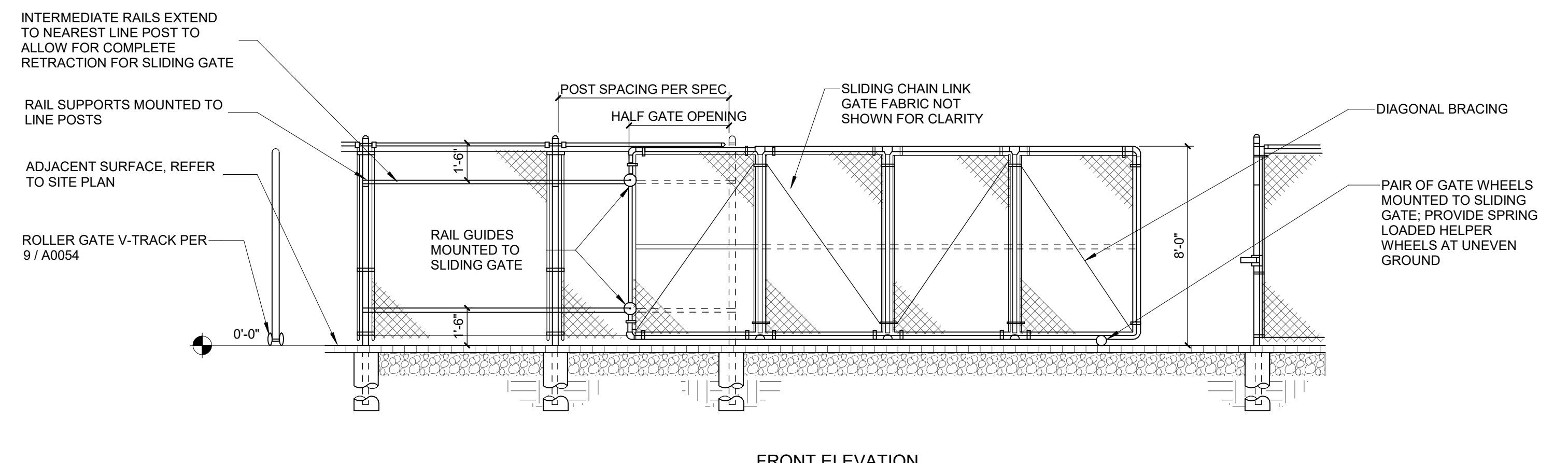
3 ROLLING GATE FOOTING  
1" = 1'-0"



2 CHAIN LINK FENCE GATE  
1/2" = 1'-0"



1 MANUAL ROLLING GATE  
1/4" = 1'-0"



**Tri-City Medical Center**  
 Tri-City Medical Center  
 Psychiatric Health  
 Facility

4002 Vista Way  
 Oceanside, CA 92056

**CANNONDESIGN**

656 Fifth Avenue, Suite A  
 San Diego, CA 92101  
 P: 619.398.0215  
 F: 619.814.1249

www.cannondesign.com

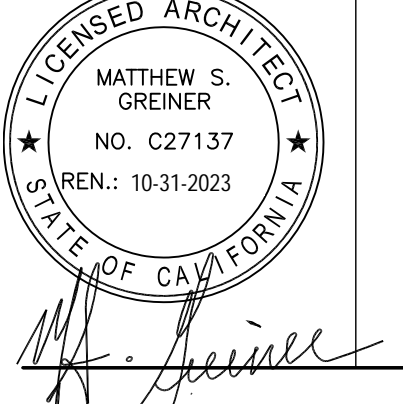
**KPFF**  
 Civil/Structural Engineer  
 3131 Camino Del Rio N, Suite 1080  
 San Diego, CA 92108  
 619.521.8500

**GroundLevel Landscape Architecture, Inc.**  
 Landscape Architect  
 2605 State Street, Suite B  
 San Diego, CA 92103  
 619.325.1990

Rev.	Description	Date
ISSUE FOR PLAN REVIEW		21 JAN 2022
BACKCHECK		
ISSUE FOR PLAN REVIEW		27 OCT 2021
ISSUE FOR PLANNING		15 DEC 2020
ISSUE FOR GRADING PERMIT		03 DEC 2020

Rev.	Description	Date
AGENCY APPROVAL		

ARCHITECT SEAL CONSULTANT SEAL



Drawing Title:

**SITE DETAILS**

Issue Date: 01/21/2022  
 Project No.: 006240.00 Checked by: Checker

**A0054**

© 2019 The Cannon Corporation

© 2019 The Cannon Corporation  
 All rights reserved. No part of this document may be reproduced, stored in a retrieval system, or transmitted in any form or by any means, electronic, mechanical, photocopying, recording, or by any information storage and retrieval system, without written authorization by The Cannon Corporation.  
 1/21/2022 10:54:08 AM



**Tri-City Medical Center**  
 Tri-City Medical Center  
 Psychiatric Health  
 Facility

4002 Vista Way  
 Oceanside, CA 92056

**CANNONDESIGN**

656 Fifth Avenue, Suite A  
 San Diego, CA 92101  
 P: 619.398.0215  
 F: 619.814.1249

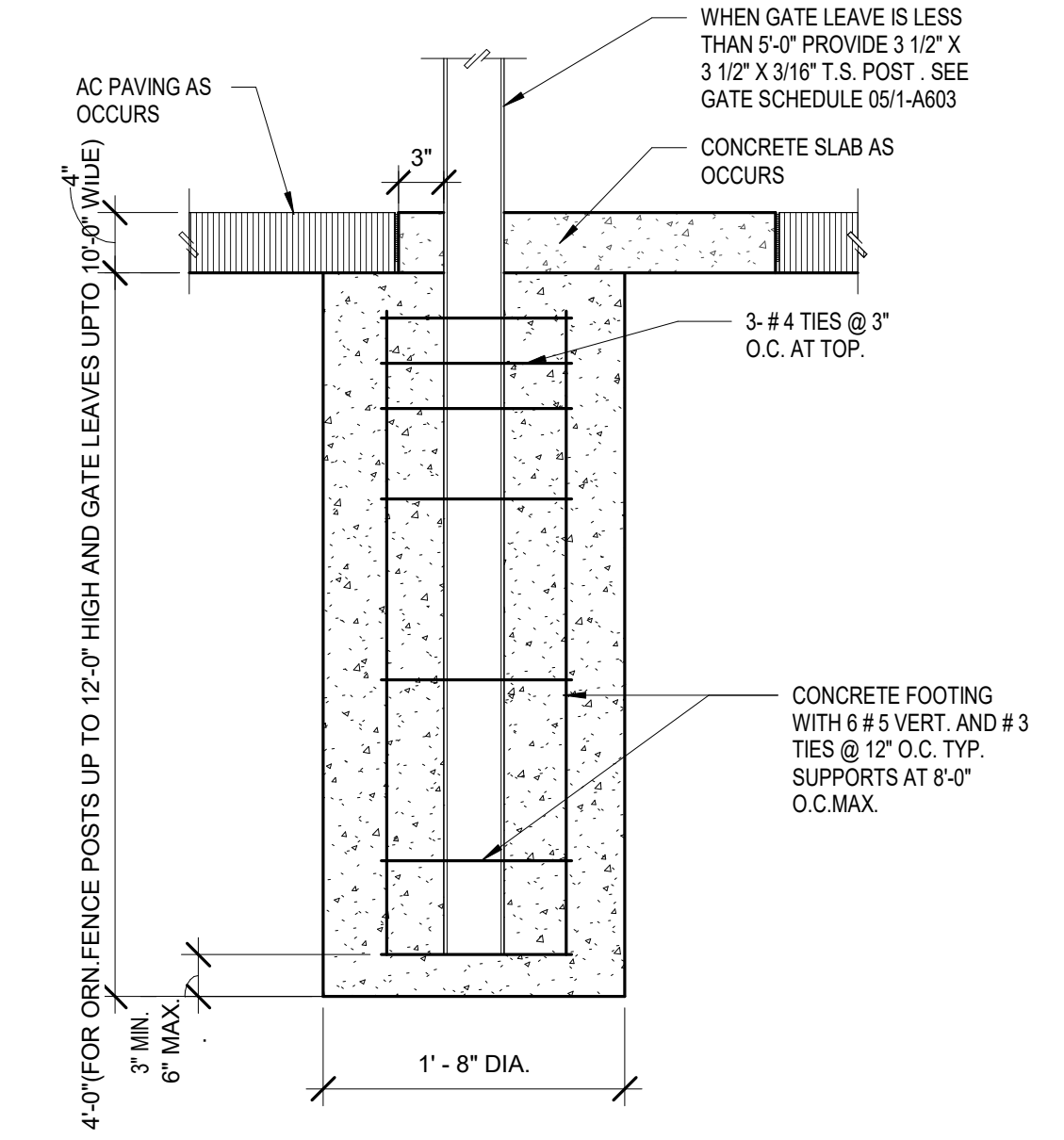
www.cannondesign.com

**KPFF**  
 Civil/Structural Engineer  
 3131 Camino Del Rio N, Suite 1080  
 San Diego, CA 92108  
 619.521.8500

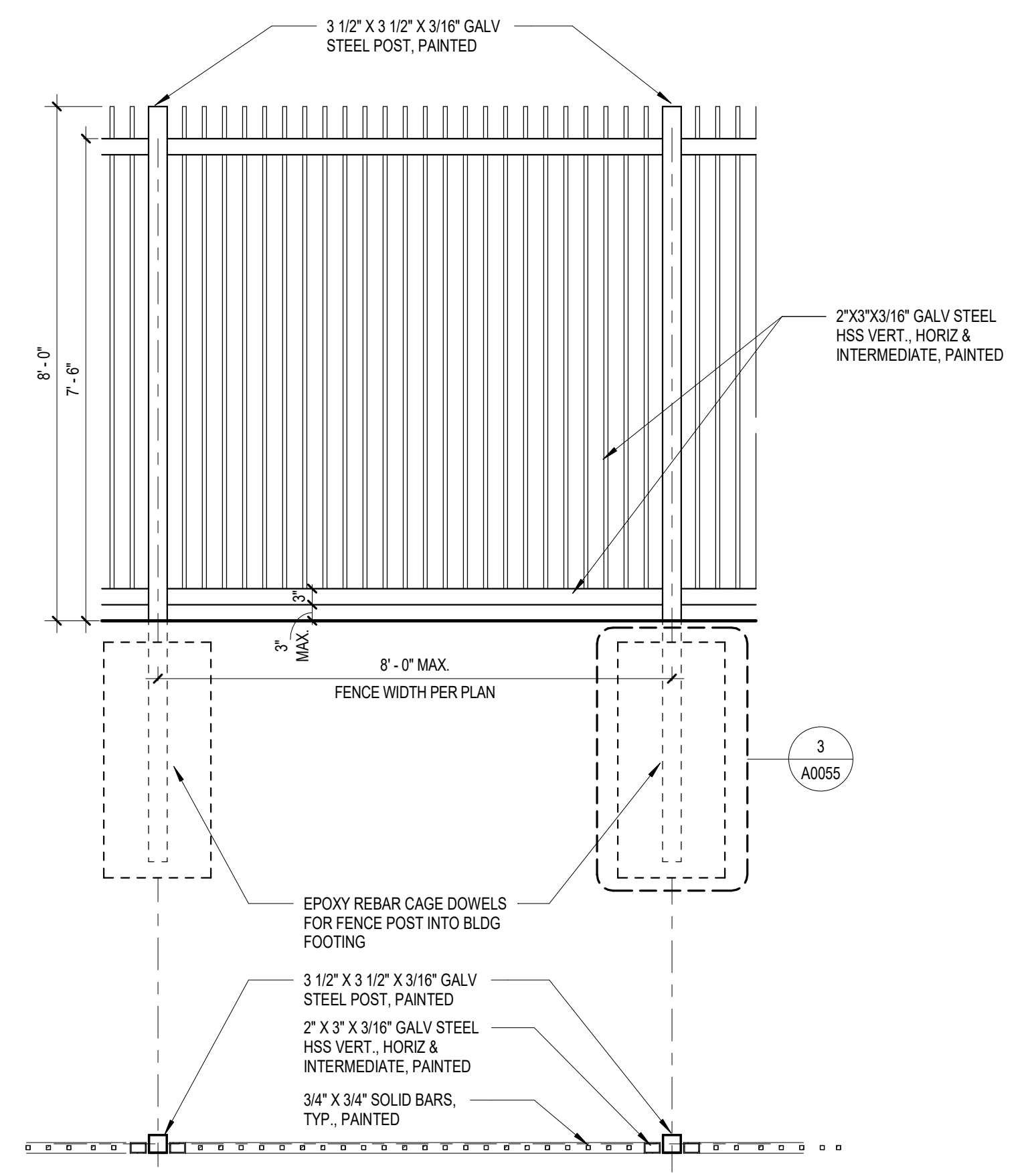
**GroundLevel Landscape Architecture, Inc.**  
 Landscape Architect  
 2605 State Street, Suite B  
 San Diego, CA 92113  
 619.325.1990

Rev.	Description	Date
1	ISSUE FOR PLAN REVIEW	21 JAN 2022
2	BACKCHECK	
3	ISSUE FOR PLAN REVIEW	27 OCT 2021
4	ISSUE FOR PLANNING	15 DEC 2020
5	ISSUE FOR GRADING PERMIT	03 DEC 2020

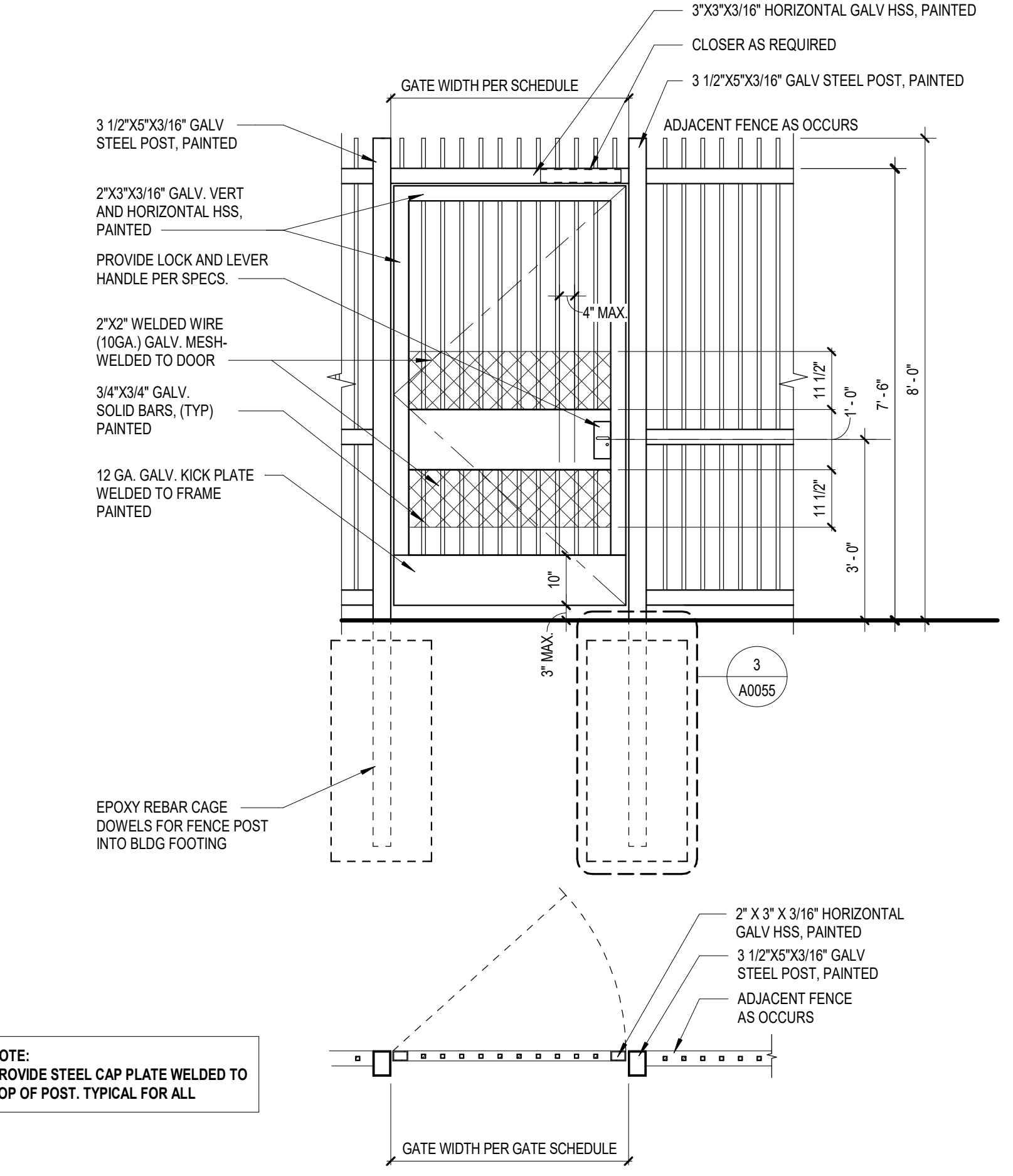
Rev.	Description	Date
1	AGENCY APPROVAL	



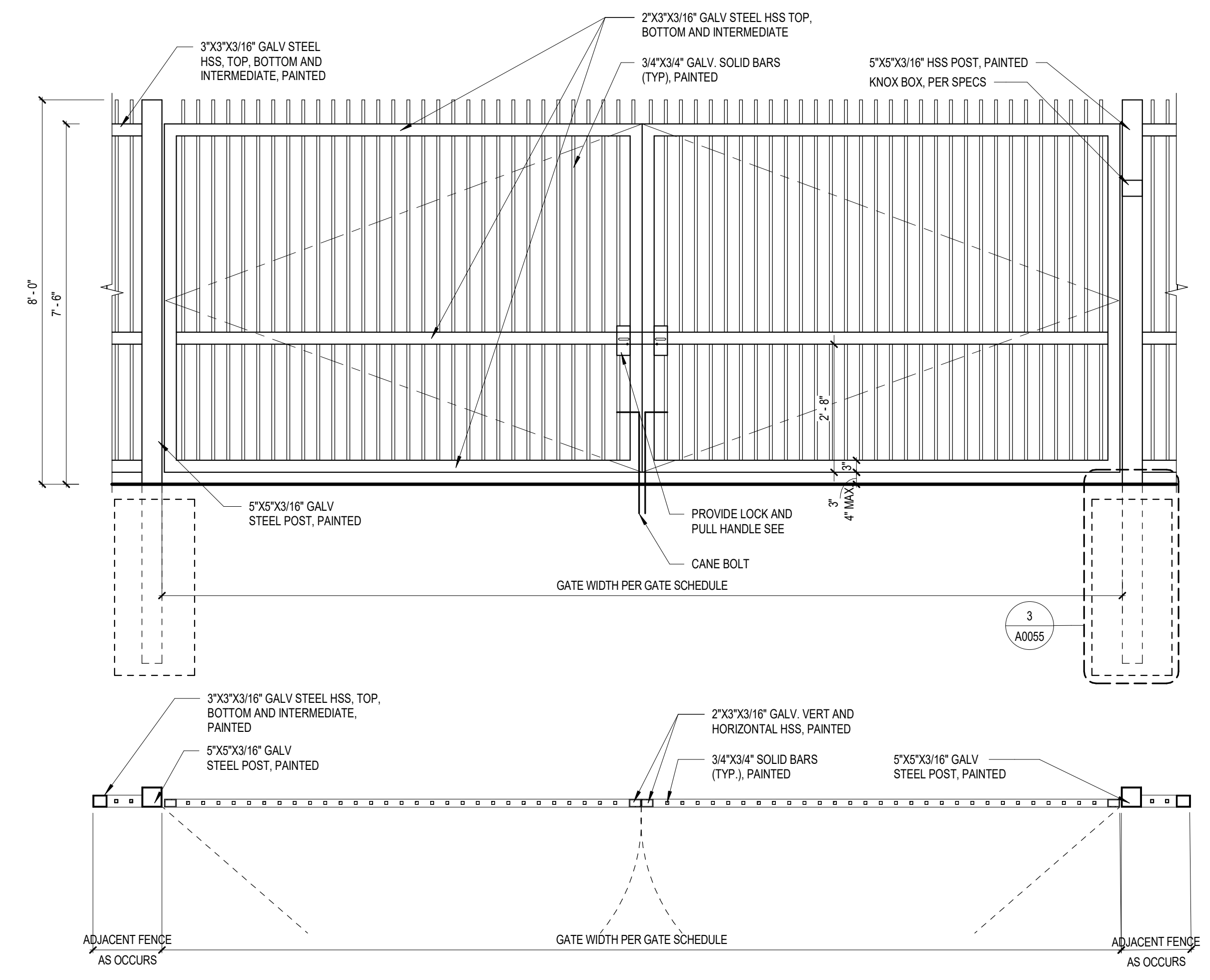
**3 ORNAMENTAL FENCE FOOTING**  
 1/2" = 1'-0"



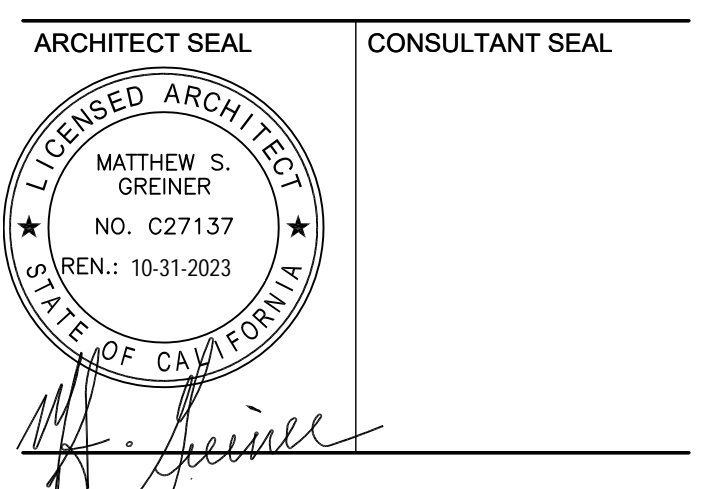
**2 MPR - OUTDOOR PLATFORM FENCE**  
 1/2" = 1'-0"



**1 GATES G-01, G-05, M-G01 & M-G02 WITH PANIC**  
 1/2" = 1'-0"



**4 FIRE ACCESS GATE (G-02) & ADJACENT MAN GATE (G-02a)**  
 1/2" = 1'-0"



Drawing Title:

**SITE DETAILS**

Issue Date: 01/21/2022

Project No.: 006240.00 Checked by: Checker

**A0055**



Tri-City Medical Center  
Psychiatric Health Facility

4002 Vista Way  
Oceanside, CA 92056

CANNONDESIGN

656 Fifth Avenue, Suite A  
San Diego, CA 92101  
P: 619.398.0215  
F: 619.814.1249

www.cannondesign.com

KPFF  
Civil/Structural Engineer  
3131 Camino Del Rio N, Suite 1080  
San Diego, CA 92108  
619.521.8500

GroundLevel Landscape Architecture, Inc.  
Landscape Architect  
2605 State Street, Suite B  
San Diego, CA 92103  
619.325.1990

SHEET LEGEND

NOTE: REFER TO G0020 FOR ADDITIONAL WALL TYPE INFORMATION.

- NON-RATED PARTITION
- 2HR-RATED PARTITION
- 1HR-RATED PARTITION

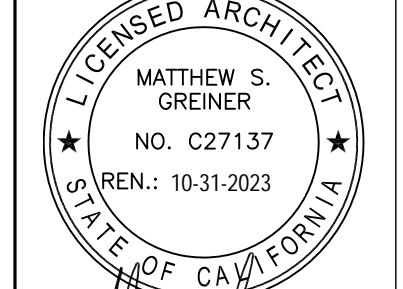
GENERAL NOTES

- PROVIDE ACCESS DOORS OF APPROPRIATE SIZE, TYPE AND FIRE RATING FOR ALL CONCEALED ITEMS THAT REQUIRE ADJUSTMENT, MAINTENANCE, MONITORING, ETC. COORDINATE LOCATIONS WITH ARCHITECT.
- DO NOT DETERMINE DIMENSIONS AND SIZE OF THE GRAPHIC REPRESENTATIONS SHOWN ON THE DRAWINGS BY USING MEASURING DEVICES (DO NOT "SCALE"). RELY ON THE NUMERIC DIMENSIONS SHOWN ON THE DRAWINGS FOR MEASUREMENT. IF DIMENSIONS ARE NOT PROVIDED NOTIFY ARCHITECT FOR CLARIFICATION.
- DIMENSIONS ARE TAKEN FROM CENTERLINE OF STRUCTURE, FACE OF PLASTER OR FINISHED FACE OF PARTITIONS, UNO. SEE PARTITION TYPES SHEETS A1001 AND A1002 FOR PARTITION DESCRIPTIONS.
- CEILING ITEMS IN CEILING PANELS, UNO. REFER TO THE REFLECTED CEILING PLANS.
- REFER TO FINISH PLAN FOR FINISH PLAN SYMBOLS.
- THE CONTRACTOR SHALL BE RESPONSIBLE FOR VERIFYING ALL DIMENSIONS AT THE SITE.
- THE CONTRACTOR SHALL NOTIFY THE ARCHITECT OF ANY DISCREPANCIES BETWEEN FIELD OBSERVATION AND CONTRACT DOCUMENTS.
- ALL DETAILS AND SECTIONS SHOWN ON THE DRAWINGS ARE INTENDED TO BE TYPICAL AND SHALL BE CONSTRUED TO APPLY TO SIMILAR SITUATIONS ON THE PROJECT UNLESS A DIFFERENT DETAIL OR SECTION IS SHOWN.
- THE CONTRACTOR SHALL EXAMINE ALL OF THE DRAWINGS AND COORDINATE THE WORK SO THAT ALL WORK SHOWN IS PROVIDED BY THE APPROPRIATE TRADE CONTRACTOR OR SUBCONTRACTOR WITHOUT REGARD TO WHERE THE WORK IS DESCRIBED.
- ALL WORK SHALL CONFORM TO ALL PERTINENT CODES, REGULATIONS AND ORDINANCES OF THE MUNICIPALITY, STATE AND OTHER AUTHORITIES HAVING JURISDICTION. REFER TO CODE COMPLIANCE PLANS FOR REFERENCE.
- ACCESS PANELS SHALL MATCH THE RATING OF THE PARTITION THEY ARE INSTALLED IN, UNLESS NOTED OTHERWISE ON PLAN. REFER TO CODE COMPLIANCE PLANS FOR RATINGS.
- WHEN TWO DIFFERENT WALL TYPES APPEAR ADJACENT TO EACH OTHER, THEIR FINISHED SURFACES SHALL ALIGN, UNO.
- PROVIDE BLOCKING BEHIND ALL ITEMS IDENTIFIED TO BE SUPPORTED OFF ANY INTERIOR PARTITION. COORDINATE ANY BLOCKING WITH EQUIPMENT AND FURNITURE ITEMS WITH EQUIPMENT PROVIDER.
- REFER TO CODE COMPLIANCE PLANS FOR PARTITION FIRE RATINGS. NOTIFY ARCHITECT IF PARTITION TAG SHOWN ON THE PLANS DOES NOT MATCH THE REQUIRED FIRE RATING IDENTIFIED ON THE CODE COMPLIANCE PLANS.
- DOORS AND GLAZED OPENINGS WITHIN A FIRE RATED PARTITION ARE TO HAVE THE APPROPRIATE FIRE RATING AS INDICATED ON THE OPENING SCHEDULES. IF FIRE RATING DESIGNATIONS LISTED ON THE OPENING SCHEDULE CONFLICT WITH THE PARTITION FIRE RATING NOTIFY ARCHITECT. REFER TO CODE COMPLIANCE PLANS FOR REFERENCE.
- PENETRATIONS OF FIRE RESISTIVE WALLS, FLOOR, CEILINGS AND ROOF-CEILINGS SHALL BE PROTECTED AS REQUIRED IN CBC SECTION 714.
- PORTABLE FIRE EXTINGUISHERS WILL BE INSTALLED AS PER SPEC 906
- PENETRATIONS OF FIRE RESISTIVE WALLS, FLOOR, CEILINGS AND ROOF-CEILINGS SHALL BE PROTECTED AS REQUIRED IN CBC SECTION 714.
- THE FACILITY INCLUDING PATIENT ROOMS, EXAM ROOM, WAITING ROOM, BATHROOMS, ETC. COMPLIES WITH 11B-805, AS PER SEC. 11B-223.4.

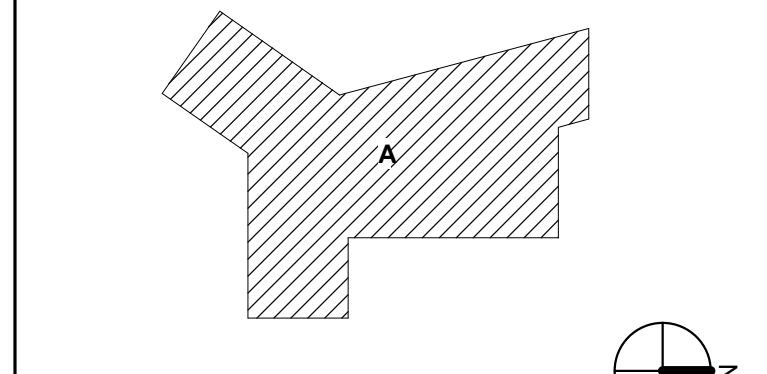
Rev.	Description	Date
1	ISSUE FOR PLAN REVIEW	21 JAN 2022
2	BACKCHECK	
3	ISSUE FOR PLAN REVIEW	27 OCT 2021
4	ISSUE FOR PLANNING	15 DEC 2020
5	ISSUE FOR GRADING PERMIT	03 DEC 2020

Rev.	Description	Date
	AGENCY APPROVAL	

ARCHITECT SEAL CONSULTANT SEAL



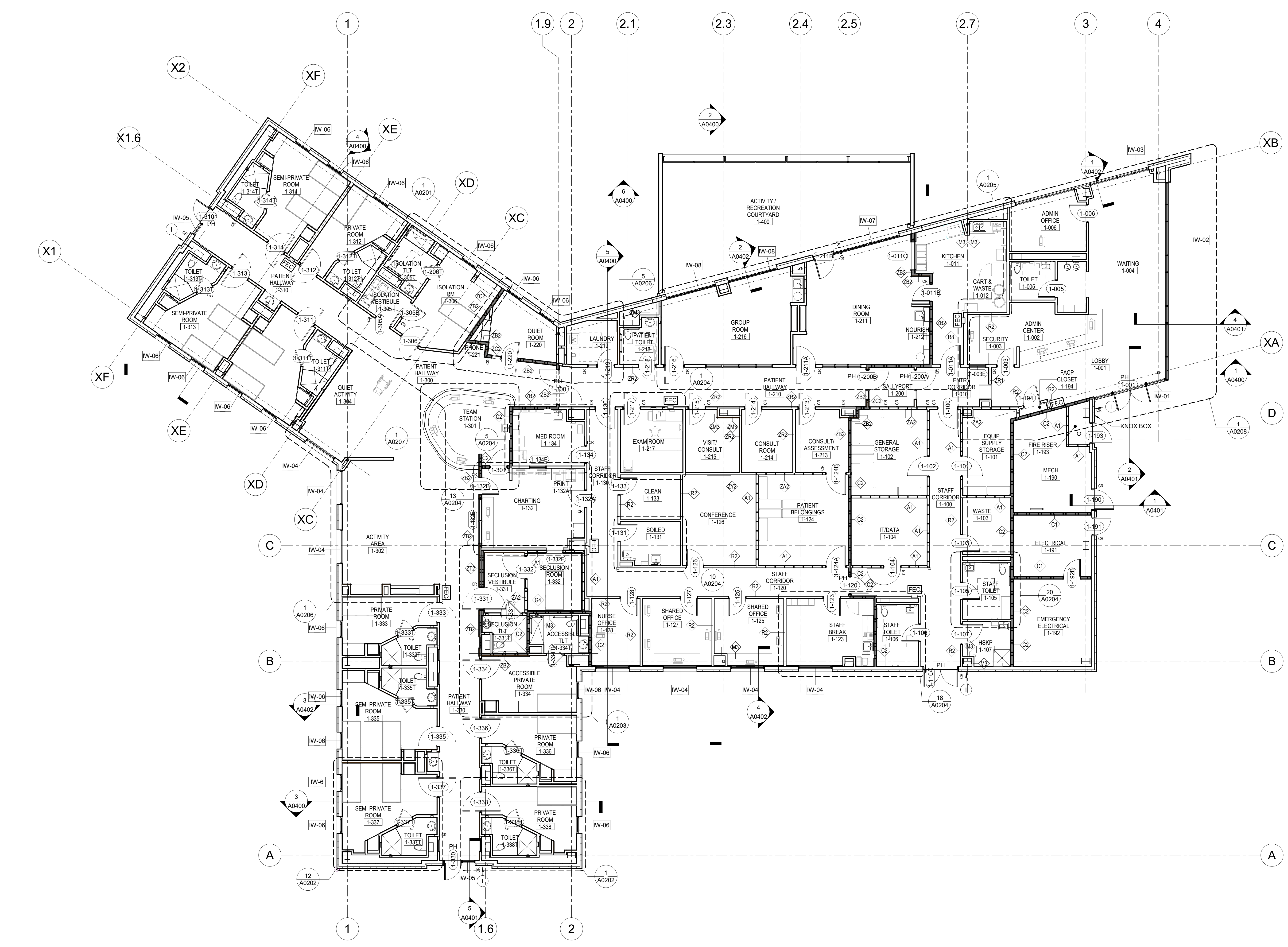
Matthew S. Greener  
No. C27137  
Ren: 10-31-2023



KEY PLAN  
LEVEL 01 FLOOR PLAN

Issue Date: 01/21/2022  
Project No.: 006240.00 Checked by: Checker

A0101



1 LEVEL 01 PLAN  
1/8" = 1'-0"

